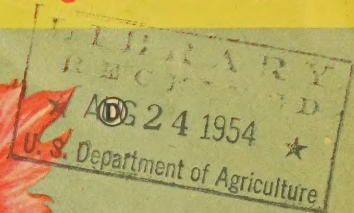


Visit our growing
farms and supermarket
for quality and savings



SPRING HILL'S 1954 PLANTING TIME

FALL SALE



BLACK PARROT

6 for 95¢

188—This eye-catching new black-red is a sport of La Tulip Noire. Glistening ebony, purple and maroon blend. *New low price, 3 for 59¢; 6 for 95¢; 12 for \$1.75. 25 or more at 14¢ each.*



Parrot Tulips

Spring Hill's new varieties of Parrot tulips have strong stems, huge robust flowers with a rich brilliance and artistic gracefulness. They are splendid for cut-flowers and wonderfully effective for decorations. Our sales on this fashionable tulip is increasing remarkably each year. All 1st size 11-12 c.m. imported bulbs that will bloom for many years.

(A) **ORANGE FAVORITE**—181—Sweet scented, orange-scarlet. 5 for 60¢; 10 for 95¢; 20 for \$1.69; 40 for \$3.20.

(B) **BLUE PARROT**—182—Enormous in size, exquisite form. 5 for 75¢; 10 for \$1.35; 20 for \$2.45; 40 for \$4.65.

(C) **SUNSHINE**—183—Outstanding golden-yellow variety. 5 for 75¢; 10 for \$1.35; 20 for \$2.45; 40 for \$4.65.

(D) **FANTASY**—184—Huge blooms of colorful pink shades. 5 for 60¢; 10 for 95¢; 20 for \$1.69; 40 for \$3.20.

(E) **PIERSON**—185—A large crimson-maroon. 5 for 65¢; 10 for \$1.10; 20 for \$1.89; 40 for \$3.55.

(F) **FIREBIRD**—186—An intense bright carmine-red. 5 for 65¢; 10 for \$1.10; 20 for \$1.89; 40 for \$3.55.

PARROT TULIP GARDEN

1867—Fully guaranteed rainbow mixture of red, pink, yellow, blue, maroon and orange. 1st size 11-12 c.m. Holland grown.

15 for 98¢

50 for \$2.69

100 for \$5.25

25 for \$1.50

SPRING HILL NURSERIES, Tipp City, Ohio

EST. 1849



105th Anniversary



Hybrid LILACS

International favorites renowned for their great abundance of large colorful, fragrant blooms. Big, grafted plants grown and sold by Spring Hill at New Low Prices.

BERRYER—2K1—Huge flower trusses of beautiful, double satiny-rose-pink blooms.

CHAS. JOLLY—2K2—One of the, if not the very best, double red lilacs.

MICHAEL BUCHNER—2K3—Beautiful pinkish-lilac, double blooms. Free flowering.

MME. LEMOINE—2K4—The most popular and an excellent large, double, snowy-white.

PRESIDENT GREVY—2K5—Extra large, fragrant flower trusses of clear, double blue.

LUDWIG SPAETH—2K6—High rated, extremely fragrant, beautiful deep violet-red.

Choice of above six hybrid lilacs. Heavy, well branched field grown, grafted 4 yr. old plants. 18 to 24 inch, 89c each; 2 for \$1.60; 6 for \$4.65. 2 to 3 ft. size, \$1.25 each; 2 for \$2.35; 6 for \$6.50. 3 to 4 ft., \$1.60 each; 2 for \$2.95; 6 for \$8.50.

Hybrid Lilac Garden Special

2KG7—One each White, Blue, Pink, Purple, Red. Guaranteed extra choice varieties all 3 yr., 2 to 3 ft. tall, grafted plants most of which bloomed in our nursery this spring. Labeled as to color only. Regular \$6.25 value.

All 5 for \$4.95

OLD FASHIONED PURPLE LILAC

2K8—(*Syringa Vulgaris*) Ever popular, exquisitely fragrant lilac flowers are desirable for bouquets. Great masses of billowy blooms in spring. Plants last for lifetime. 15 inch size, 45c each; 3 for \$1.15. 18 to 24 inch size, 65c each; 3 for \$1.65. 2 to 3 ft. size, 80c each; 3 for \$2.20; 10 for \$6.95.

IMPROVED PERSIAN LILAC

2K9—(*Syringa Rothomagensis*) Compact and more dwarf growing than old-fashioned lilac. Flowers are so abundant the entire plant looks like a bouquet. Big pink buds of vivid lilac-rose are long-lasting and slightly fragrant. Wonderful for hedges. 18 inch, 60c each; 3 for \$1.55. 2 to 3 ft., 90c each; 3 for \$2.45; 10 for \$7.70.



ROSA MULTIFLORA The Miracle Living Fence

2H10—Protect and beautify your property. A cheap practical fence that grows so dense no person or animal can get through.

The plans grow 6 to 8 ft. tall and 5 to 7 ft. wide, are tough and fast growing. Covered with a multitude of white flowers in spring; loaded with attractive red fruit in fall and winter which provide food for wild life.

Recommended by U. S. Soil Conservation service for livestock farm fence and for factories, parks, estates, institutions, large lawns, etc. that wish to keep animals and trespassers off their property. Present recommendation by U.S.D.A. are to plant 1 ft. apart in a single row for stock tight fence. Ornamental hedges can be planted 18 inches

apart and kept trimmed to desired height. Trial fences planted throughout east, west and south have proven successful. North of Milwaukee there is danger of winter injury. The general use of rosa multiflora is just beginning but its value is proven for cheap fence, game management, property protection, windbreaks and erosion control to soil and crops, will last for generations.

BIG DEMAND, WE SUGGEST EARLY ORDERS

6 to 12 inch	12 to 18 inch	18 to 24 inch
10 for .85	10 for \$1.15	10 for \$1.65
25 for \$1.50	25 for \$2.50	25 for \$3.50
100 for \$4.95	100 for \$7.50	100 for \$12.50
1000 - \$40.00	1000 - \$65.00	1000 - \$110.00

(500 or more plants of a size at 1000 rate)

VISIT AMERICA'S GREATEST ANNUAL

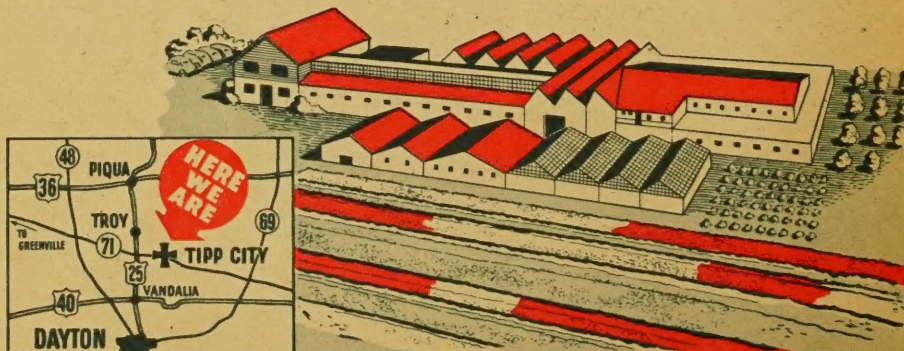
MUM FIELD DISPLAY

**MILLIONS OF BLOOMS!
ACRES OF PLANTS!
DOZENS OF COLORS!**

Come to Tipp City and see this amazing chrysanthemum exhibit. Over 175,000 plants, more than 300 different varieties of the best hardy chrysanthemums. All colors, sizes and shapes of the world's leading varieties. Big savings when you select and dig your own field grown plants from our acres of blooms.

You'll enjoy our super market plan offering the most complete list of nursery stock in the mid-west.

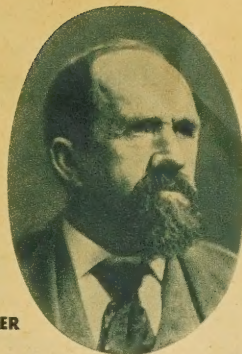
SHOP IN COMFORT AT AMERICA'S LARGEST NURSERY SUPER MARKET



Spring Hill Nurseries, Tipp City, Ohio



Continuously operated
by **ONE FAMILY**
for over 100 years



H. N. KYLE
son-in-law,
sec'y-treas. 1909 to 1928

W. F. BOHLENDER
son and gen. mgr.
1912 to 1936

PETER BOHLENDER
Founder 1849

TOM KYLE
President, Gen. Mgr.

HOWARD KYLE
Vice Pres., Sec'y.

IMPORTANT INFORMATION FOR CUSTOMERS WHEN ORDERING

NEW REDUCED PRICES ON MANY VARIETIES

BUY SPRING HILL'S QUALITY PLANTS for a square deal and big savings—sold in standard grades, adopted by American Association of Nurserymen. No wild claims of miracle crops or blooms—simple, honest descriptions.



You can dig field grown cushion mums like this at our nursery this fall.

DIG YOUR OWN CHRYSANTHEMUMS

Drive to the nursery this fall and dig your own big flowering chrysanthemums from our colorful fields. Your choice of over 200 different varieties, all colors and types. Acres of plants to select from. Take advantage of this opportunity to enjoy big savings by doing your own digging.

Note! We furnish spades, bring your own baskets or boxes.

New Reduced Prices when you select and dig your own field grown mums.

58c each • 4 for \$1.69

Please add 50c when we dig plants for you. (4 plants with tops for \$2.19)

ORDERS ACKNOWLEDGED

As soon as your order is received we send an acknowledgement (mailed first class) stating amount of your order, when received and most important—YOUR ORDER NUMBER. Keep this acknowledgement we send you with your assigned order number. We will be unable to locate your order without this number. We must know this number if you wish us to refer to your order.

ORDER ADJUSTMENT

Your original order is returned to you when shipment of plants is made. However, if there is a shortage on your order the order blank is retained by us and is returned to you when shipment is completed. Keep this order blank and in event of any error, claim or adjustment it will be necessary for you to return your original order with your letter. If your entire order is not shipped, shortage will be shipped later or refund will be made. Remember, we cannot correspond with you regarding your order unless your order number and original order is returned to us.

TERMS AND REMITTANCE

All orders should be accompanied with remittance. Please mail Post Office Money Order, Express Money Order or personal check. Spring Hill cannot be responsible for currency, stamps, war stamps or cash unless sent by registered mail. (Wrap coins securely.) SORRY, C.O.D. ORDERS NOT ACCEPTED. Please add 25c service charge if your order is less than \$2.00. Our overhead expense is so great that orders under \$2.00 cannot be handled at our low prices.

HOW TO ORDER

Use order blanks enclosed. List the variety of plants you want, state catalog number, size and price. Advise DATE you wish your order shipped.

WAR STAMPS ACCEPTED

Mail war stamps in payment of your order.

NO AGENTS OR SALESMEN

Spring Hill Nurseries has NO SALESMEN OR AGENTS! Order direct from this catalog or call at the nursery, otherwise, your order is not backed up by our guarantee.

Important . . . Please add postage.

(Transportation Notice)—When nursery stock or plants are to be shipped by parcel post, please add 10% for packing and postage. This enables us to give our customers the lowest possible selling price for big, first class plants. If you do not include postage charges, your order will be shipped express collect or we will bill you for the parcel post. Trees over 5 ft. tall will be shipped express. Ohio customers please add 3% sales tax. Customers West of Rocky Mts., please add 20% for delivery, packing charges.

VISIT THE NURSERY

Bring your family or friends and drive to Spring Hill. View for yourself our growing farms of over 500 acres. See our large sales shed stocked with big values. Each year thousands of visitors take advantage of our quality plants and savings.

Our GUARANTEE to you

We guarantee high quality stock, exactly as represented, government inspected, true to name and to arrive safely in healthy, live growing condition. Any plants that reach you otherwise will be replaced free.

REPLACEMENTS—We guarantee our plants to grow, bloom and produce if given intelligent handling, proper planting and reasonable care. Weather conditions, carelessness and lack of experience by the planter are conditions beyond our control; regardless of this, Spring Hill will replace any plants that fail to grow at half the original purchase price if notice is made three months after delivery of your order. Please enter complaints immediately. It is mutually agreed that our liability cannot be greater than purchase price. **GUARANTEED SATISFACTION.**

Hundreds of visitors each spring; you are always welcome.

Inside view, America's largest nursery sales shed.

Acres of the finest hardy mums in bloom to select from.

Dig these big blooming plants at tremendous savings.





PLANT SPRING HILL'S
HOME GROWN

FRUIT TREES

Guaranteed Superior Quality at Substantial Savings

Spring Hill is the largest grower of fruit trees in Ohio. Scientifically propagated and grown by modern techniques from pedigree parent trees. Buy the best for less.

Hardy APRICOTS

Beautiful ornamental and productive trees make excellent low growing, broad-headed trees for landscaping and lawn. Handsome foliage, beautiful pink blooms and large, delicious fruit ripening right after cherries. Note! We recommend you plant one each of apricots listed as pollination will increase yields.

MOORPARK—4F1—Extra large freestone, golden-orange fruit; sweet and juicy.

HENDERSON—4F2—New freestone variety of huge size and superb golden color with delicious flavor and big crops. Recommended in every way.

2 yr., 2 to 3 ft. size, 95c ea.; 5 for \$4.25; 10 for \$7.95. 3 yr., 5 to 7 ft. quick crop size, \$2.50 each; 5 for \$11.95; 10 for \$23.00.

APRICOT TREE SPECIAL

4FG3—Two 5 to 7 ft. quick crop Apricot Trees—1 Henderson Apricot; 1 Moorpark. Plus a free gift of 3 quick crop, everbearing September raspberries.

ALL 5 PLANTS FOR \$4.79



Hardy PLUMS

BURBANK 4F16—Big, bright red plum fruit of excellent quality, profitable crops.

GREEN GAGE 4F17—Beautiful rich golden green sweet fruits for eating and cooking.

GIANT PRUNE 4F18—Big, dark blue freestone; sweet, mellow, yellow flesh.

STANLEY PRUNE 4F19—Best large purple freestone plum unsurpassed quality, size.

IMPROVED SHROPSHIRE DAMSON 4F20—Heavy fruiting bright blue freestone strain.

Choice of 5 Varieties described above.

3 to 4 ft., 7/16 to 9/16, \$1.49 each; 2 for \$2.85; 5 for \$6.75.

5 to 7 ft., 3 yr. quick crop 11/16" & up, \$1.98; 2 for \$3.85; 5 for \$9.40.



Quick Fruiting CHERRIES

ROYAL ANN (Sweet cherry) 4F5—Popular sweet cherry for canning and eating. Golden-amber with red blush. Large, firm, juicy. Enormous crops.

BLACK TARTARIAN (Sweet cherry) 4F6—Nation-wide popularity. Large, heart-shaped, rich dark purple, famous ox-heart (almost black) fruits. Sweet flavor.

MONTMORENCY (Sour cherry) 4F7—Universally recognized the best sour cherry. Bears very young; large fruit. Highest yielding canning and pie cherry.

PRICES OF CHERRY TREES State size, name and cat. no. Choice of 3 varieties described above.

Description see above Size and trunk diameter	Price each	Price of 2 trees	Price of 5 trees	Price of 10 trees
3 ft., 7/16 to 9/16 in.	1.15	2.20	5.25	9.95
4 to 5 ft., 9/16 to 11/16 in.	1.79	3.50	8.50	16.70
5 to 7 ft., 11/16 & up. Quick crop	2.50	4.90	12.00	23.75

New Richmorency Cherry

4F8—(U. S. Plant Patent No. 316) A large fruiting, extra early ripening Montmorency. A good money maker because of the immense size, high quality, vigorous growing hardy trees. Ripens 10 days ahead of regular Montmorency. 3 ft. size, \$1.35 each; 2 for \$2.65; 10 for \$11.95. 4 to 5 ft. size, \$2.25 each; 2 for \$4.35; 10 for \$21.00. 5 to 7 ft., quick crop, \$2.95 each; 2 for \$5.75.

CHERRY TREE SPECIAL

4FG21—1 Royal Ann, 1 Black Tartarian, 1 Montmorency, 1 Richmorency. All 4 to 5 ft. size, plus free Nanking Cherry, 1 to 1 1/2 ft. size. Regular catalog value \$8.37.

ALL 5 FOR \$6.95

Spring Hill's Quality PEARS

CONFERENCE—4F10—The famous imported English Bartlett. Beautiful pink coloring, rich flavor, good yields.

IMPROVED KIEFFER—4F12—Our best winter pear; excellent for canning; eating.

BARTLETT—4F11—The most popular pear in the world. Famous for high quality, juicy, sweet fruit and large yields.

SECKEL—4F14—The well known sugar pear, prized for its flavor and eating.

PEAR TREE PRICES State size, name and catalog number. Choice of 4 varieties described above.

Catalog No. Size	Description Above Trunk Diameter	Price each	Price of 2 trees	Price of 5 trees	Price of 10 trees
4 to 5 ft., 9/16 to 11/16 inch		1.35	2.60	6.25	12.00
5 to 7 ft., quick crop, 11/16 to 3/4 in.		1.98	3.85	9.40	18.50

Cope's Seedless Pear

4F22—(Patent Pending) A new triumph; no seed, no core to waste, every bite a delight. Excellent bartlett-like flavor, size and color. More fruit if another variety of pear is planted near for pollination. 4 to 5 ft., \$1.65 each; 2 for \$3.20; 6 for \$9.30. 5 to 7 ft., \$2.25 each; 2 for \$4.40.



Big Bartlett Pears on Dwarf Trees

4F15—Dwarf Bartlett Pear. Full size fruit on beautiful miniature trees. Will bear first or second year, special dwarfing root stock make trees blight resistant. Ideal for city lot planting. Reduced price. 3 yr., 3 to 4 ft., \$2.95 each; 2 for \$5.75. 2 to 3 ft. tall, \$2.15 each; 2 for \$4.15; 6 for \$11.95.

Spring Hill Nurseries, Tipp City, Ohio



DWARF APPLE TREES

Grafted on imported number IX Malling Ministry certified stocks. Full size fruit on beautiful low, bushy trees 6 to 10 ft. tall when mature. Trees bear young, pick easier, large, top grade apples of fine flavor. Choice of following varieties, described below.
YELLOW TRANSPARENT—5F30, McINTOSH—5F31, GRIMES GOLDEN—5F32, DOUBLE RED DELICIOUS—5F33, DOUBLE RED STAYMEN WINESAP—5F34.

New low prices of 5 dwarf apple listed above. 2 to 3 ft. size, \$2.45 each; 3 for \$6.98; 5 for \$11.25. Quick crop, 3 to 4 ft. size, \$3.25 each; 3 for \$9.45; 5 for \$15.50.

DWARF PEACH TREES

Grafted on Prunus Tomentosum the finest hardy, dwarfing understock. Trees often bear 1st year. Choice of **GOLDEN JUBILEE—5F35, CHAMPION—5F36, HALE HAVEN—5F37**, described below.

Prices of 3 dwarf peach trees listed above. 3 to 4 ft. size, \$2.45 each; 3 for \$6.98; 12 for \$27.30. 4 to 6 ft. quick crop, \$3.25 each; 3 for \$9.45.

Delicious Hardy PEACHES

- **RED HAVEN 5F17**—New, hardy, extra early ripening, sweet, yellow freestone. Introduced by Michigan Exp. Sta.
- **GOLDEN JUBILEE 5F18**—High yielding, early ripening, yellow freestone. Unsurpassed for canning. Good color, flavor and quality.
- **EARLY ELBERTA 5F19**—Like Elberta but bears two weeks earlier. Delicious, large, golden-yellow freestone.
- **HALE HAVEN 5F20**—Today's most planted, most popular and most dependable hi-yielding, hi-quality, hardy yellow freestone.

PEACH TREE PRICES

Choice of above 8 varieties of peach tree, U. S. Standard Grades.

Description & Cat. No. See above Age, size and trunk diameter	Price Each	Price of 2 trees	Price of 5 trees	Price of 10 trees	Price of 25 trees
GOOD, 3-4 ft., 7/16 to 9/16 in.	.89	1.70	3.95	7.75	18.75
BETTER, 4-5 ft., 9/16 to 11/16 in.	1.35	2.60	6.25	12.25	29.95
BEST, 5-7 ft., 11/16 in. & up, Quick crop giants	1.95	3.75	9.25	18.25	45.00

SURE CROP NECTARINES

5F28—Unusual, delicious, sweet fruits with thin, smooth skin like a plum. Mellow, rich, juicy, flesh like peaches. Unequaled for eating, fresh or canned. Trees and fruit resemble peaches and can be grown where peach trees grow. Trees bear young—usually 2nd year.

3 to 4 ft., \$1.00 each; 2 for \$1.90; 6 for \$5.40.
 5 to 7 ft., \$1.95 each; 2 for \$3.80; 5 for \$9.35; 10 for \$18.50.

Finest Quick Bearing APPLES

Listed in approximate order of ripening

- **YELLOW TRANSPARENT 5F1**—Very early. Dependable, high yielding, golden variety. Will grow fast and bear young.
- **EARLY LODI 5F2**—Improved, large, high quality, golden apple. Splendid to cook and eat. Recommended.
- **WEALTHY 5F3**—Red-striped, summer apple. Heavy yielding, fine flavor. Excellent for cooking.
- **ANOKA 5F4**—Usually bears big, red-striped apples 1st year, no waiting. A noteworthy, hardy, hi-yielding variety.
- **GIANT RAMBO 5F5**—Big, red-striped apples in abundance. Unsurpassed for eating; famous for flavor.
- **McINTOSH 5F6**—Large red fruit with snow-white flesh. Tender, juicy, long keeping, thin-skinned apples.
- **DOLGA CRAB 5F7**—High yielding; scarlet fruit. Excellent for jams and jellies. Trees semi-dwarf. Bears young.
- **JONATHAN 5F8**—High quality bright red apples to cook or eat. Dependable. Fine for cooking and eating.
- **GRIMES GOLDEN 5F9**—Big, yellow, fall ripening apples. Favorite for cooking and eating. Bears young, heavy bearer.
- **DBL. RED DELICIOUS 5F10**—Famous for color, mellowness, flavor and big crop. For eating or cooking this variety is tops.
- **YELLOW DELICIOUS 5F11**—Shape, size and quality of red delicious. Bears young and large crops.
- **DBL. RED STAYMEN WINESAP 5F12**—Double red strain. Similar in shape, size, flavor and yields to Staymen Winesap.



**FREE
PEACH TREE**

APPLE TREE SPECIAL

Fresh apples nearly every day in the year. You get five apple trees plus one Elberta peach tree.

• 1 Yellow Transparent • 1 Dbl. Red Winesap • 1 Grimes Golden • 1 Wealthy • 1 Dbl. Red Delicious

5FG14—3 to 4 ft. size, one each 5 apple trees plus 1 free Elberta peach	\$3.75
5FG15—4 to 5 ft. size, one each 5 apple trees plus 1 free Elberta peach	\$5.95
5FG16—5 to 7 ft. size, one each 5 apple trees plus 1 free Elberta peach	\$8.98

APPLE TREE PRICES

U. S. Standard Grades. Choice of 12 varieties described above.

Description & Cat. No. see above Age, size and trunk diameter	Price Each	Price of 2 trees	Price of 5 trees	Price of 10 trees	Price of 25 trees
GOOD, 2 yr., 3-4 ft., 7/16 to 9/16 in.	.89	1.70	3.95	7.75	18.75
BETTER, 2yr., 4-5 ft., 9/16 to 11/16 in.	1.35	2.60	6.25	12.25	29.95
BEST, 3 yr., 5-7 ft. quick crop 3/4" up	1.95	3.75	9.25	18.25	45.00



PEACH TREE SPECIAL

One each of 8 varieties listed and described opposite. Trees bear young.

5FG25—One each labeled best 5 to 7 ft. quick crop. All 8 peaches \$15.60 value for...	\$14.40
5FG26—One each labeled better 4 to 6 ft. size. All 8 peaches \$10.85 Value for...	\$9.60
5FG27—One each unlabeled 2 to 3 ft. Commercial size all 8 peaches \$5.20 Value for...	\$3.60



Giant Tasty RHUBARB

Plant this fall!!! Enjoy the new improved solid red, tender, highly productive rhubarb next spring. Set 3 ft. apart in well drained location.

CHIPMAN'S CANADA RED

6V1—Large, thick stalks soil-red from top to bottom. Beautiful solid red fruit when cooked, tender skin and excellent flavor. True, hand propagated plants of North America's favorite variety. 79c each; 3 for \$1.99; 6 for \$3.75.

GIANT McDONALD

6V2—Massive stalks 2 to 3 times larger than common seedling rhubarb, also sweeter. Imported hand propagated, highest yielding strain. 75c each; 3 for \$1.89; 6 for \$3.50.

VICTORIA

6V3—The standard commercial variety for many years; grown from re-selected seed. 2 yr. whole roots, 3 for 75c; 6 for \$1.25. 3 yr., 60c each; 3 for \$1.55.

RHUBARB SPECIAL

6VG4—2 Chipman's Red and 1 Giant McDonald Regular \$2.33 value. Unlabelled.

ALL 3 FOR \$2.20

Jumbo Quick-Crop Rhubarb

Roots or divisions are much larger with more eyes so they will produce more and larger stalks quicker.

CHIPMAN'S CANADA RED

6V5—Jumbo size. \$1.25 each; 3 for \$3.30.

GIANT McDONALD

6V6—Jumbo size. \$1.10 each; 3 for \$2.95.

QUICK-CROP RHUBARB GARDEN

6VG7—2 Chipman's Red and 2 McDonald Regular \$4.60 catalog value. Big savings.

ALL 4 FOR \$3.79

GARDEN SPECIAL 6VG11

2 Chipman's Rhubarb	\$1.58
2 McDonald Rhubarb	1.50
12 Washington Asparagus, 2 yr.	1.15
3 Horseradish (Crown's)70
2 Mammoth Sage, 2 yr.90
1 Chive clump40

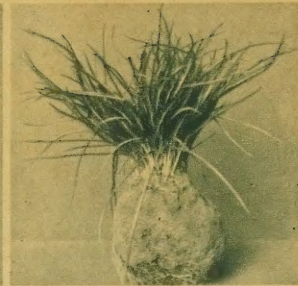
Catalog value \$6.23

All 22 for \$4.95



Snappy Horseradish

6V8—(Maliner Kren) Famous for crisp, snappy flavor. Noted for large yields of extra large white roots, easily grown. Big crown plants, 30c each; 3 for 70c; 6 for \$1.15. Root cuttings, 3 for 50c; 6 for 85c; 25 for \$2.95.



Hardy Chives

6V9—A hardy onion-like plant that grows each year without replanting. Fine for seasoning salads, etc. Pot and force indoors during winter. 2 yr. plants, 2 for 49c; 6 for \$1.25. Big clumps, 40c ea.; 3 for \$1.00.



Mammoth Sage

6V10—Famous Holt strain. Dried leaves used for seasoning sausage, dressing, etc. Blue flowering hardy plants grow for years without replanting. 1 yr. 33c each; 3 for 75c; 6 for \$1.25. 2 yr. 45c each; 3 for \$1.15.

"EASY TO SUBSCRIBE" MAGAZINE SERVICE—Enclosed in this catalog are subscription order blanks making it easy for you to order your favorite magazines at lowest prices. Save time and expense and be assured of prompt service. Merely send your order for the magazine you want to FARM JOURNAL, Subscription Service Dept., Farm Journal Bldg., Philadelphia 5, Penn., to COUNTRY GENTLEMAN, Curtis Circulation Co., Philadelphia 5, Penna., or to the POPULAR GARDENING, 90 State St., Albany, N. Y.—coupons enclosed. Mail coupon with check, money order or cash, covering the subscription prices of the magazines you select for your entire family.



BLACKBERRIES

ELDORADO (Leading Blackberry)—6F12—Large, firm fruit is juicy, sweet with fine flavor. Unexcelled for jams, jellies, freezing, etc. No. 1 plants, 6 for 98c; 12 for \$1.65; 25 for \$2.75; 100 for \$9.90; 500 for \$45.00.

QUICK CROP ELDORADO—6F14

—Larger size, better rooted plants. 5 for \$1.35; 10 for \$2.25; 25 for \$4.50.



BOYSENBERRIES

GIANT THORNLESS—6F15—The biggest berry ever developed. Often 1½ inches long of beautiful maroon-red color and superb quality for eating, freezing, canning, etc. No. 1 plants, 3 for 69c; 5 for 95c; 10 for \$1.75; 25 for \$3.95.

QUICK CROP THORNLESS BOYSENBERRIES — 6F16

—Larger sizes, better rooted plants, 2 for 75c; 4 for \$1.35; 10 for \$2.95; 25 for \$6.98.



ELDERBERRIES

ADAM'S ELDERBERRY—6F17—Attractive, tall growing shrubs for your yard or garden. Heavy fruiting, large clusters of large, juicy berries. Makes splendid pies, sauces, jelly, juices, wines, etc. Far superior to the wild and common varieties. Spring Hill's high yielding berries are worth more money. Fruiting age, 3 ft. \$1.15 each; 3 for \$3.25; 6 for \$5.95. Big, 2 ft. size, 75c each; 3 for \$1.98; 12 for \$7.25.



ASPARAGUS

WASHINGTON ASPARAGUS— 6F18

Delicious, Nutritious. Grows well in most all soils and locations. When cared for beds improve with age and last for many years. Fresh cut from your garden is best. Big annual yields. Giant Washington was developed under auspices of U. S. Dept. of Agriculture and is considered the leading variety. Practically immune to rust and has longest cutting period. Giant size, straight, tender, dark green stalks, tinged purple.

	Size	6	12	25	100
1st class, 1 yr.		\$.55	\$1.00	\$1.50	\$3.95
1st class, 2 yr.		.75	1.15	1.98	5.95
Jumbo, 3 & 4 yr.		.98	1.65	2.95	9.95

America's Finest Hardy Varieties GRAPES



Large Bearing Age Grapevines

Why wait? You can enjoy grapes from your own vines next fall. Plant now! The vines we will send you have already produced one crop of fruit. Trimmed for planting. Choice of the following. Concord—7F10, Niagara—7F11; Freedomia—7F12.

90c each 2 for \$1.60
6 for \$4.59

Bearing Age Vineyard Bargain

7FG14—Enjoy grapes in your own garden next fall—One each Freedomia, Early Blue, Niagara, Best White, Concord, Favorite Blue.

3 for \$2.35

NIAGARA—7F1—Favorite, hardy, white grape. Lusciously sweet. 2 yr., 42c each; 3 for \$1.10. 3 yr., 55c each; 3 for \$1.45.

CACO—7F2—Delicious, honey-sweet, large red fruit. 2 yr., 50c each; 3 for \$1.35. 3 yr., 65c each; 3 for \$1.75.

BUFFALO—7F3—Brand new, early ripening blue-black. Received highest rating for juice and as sweet dessert grape. 3 yr., 70c each; 3 for \$1.95. Bearing age, \$1.15 each.

GOLDEN MUSCAT—7F4—Big, yellow California native grape cross. 2 yr., 70c each; 3 for \$1.95. 3 yr., 90c each; 3 for \$2.50.

SEEDLESS CONCORD—7F5—Smaller but sweeter; with an occasional seed. Novelty for home planting. 2 yr., 75c each; 3 for \$1.75; 3 yr., \$1.00 each; 3 for \$2.75.

SIEBEL 1000 (New French Variety)—7F6—Hardy, jet black sugary sweet French grape with edible skin. Popular in commercial areas. 2 yr., 70c each; 3 for \$1.95. 3 yr., 90c each; 2 for \$1.70.

NEW INTERLAKEN SEEDLESS—7F7—The plant breeders at New York State Experiment Station crossed California Thompson seedless, producing this new early ripening (Aug. 15) extra winter hardy, vigorous, disease free, high yielding, new grape. Crisp, solid, sweet, amber-colored berries. Eat whole. (Limited supply.) 2 yr., \$1.98 ea.

DELAWARE—7F8—Attractive, compact bunches of excellent bright rose-red. Extra sweet eating and dessert grape. 2 yr., 50c each; 3 for \$1.35. 3 yr., 65c each; 3 for \$1.75.



Home Vineyard Special

7FG15—One red, white and blue. Excellent selection for home and garden.

1 Red Caco, 2 yr. 50
1 White Niagara, 2 yr. .42
1 Blue Concord, 2 yr. .35

Catalog value . . . \$1.27

Save 20%

ALL 3 FOR

98c

CONCORD — America's Finest Grape

7F9—The most popular grape in the United States commercially and for home use. This dependable, heavy yielding variety has an abundance of large bunches of big, dark blue, sweet, juicy fruits.

2 yr., 35c each; 3 for 79c; 6 for \$1.40; 25 for \$4.95. 3 yr., 45c each; 3 for \$1.15; 10 for \$2.85.

Black Walnut

7NT16—Make excellent, sturdy, tall, ornamental trees that yield heavily each year. Valuable for timber, shade and nuts with black walnut taste. 2 ft. tall: 2 for 45c; 6 for \$1.25. 3 to 4 ft., 2 for \$1.10; 6 for \$2.70. 5 to 6 ft., \$3.15 each; 2 for \$5.95.

American Hazel Nut

7NT17—Quick bearing, dwarf growing. Easy to crack, large, sweet kernels, shell out whole. Fine for shrub borders or hedges. 1 ft. size, 45c each; 3 for \$1.19; 6 for \$2.25; 25 for \$8.75. Fruiting age, 3 ft., \$1.00 each; 3 for \$2.75; 6 for \$4.98.

Chinese Chestnut

7NT18—Blight resistant, grows successfully where native trees have died. Ornamental, medium size, spreading trees. Big, sweet nuts compare to native kinds. Sturdy 2 ft. size, 2 for \$1.89; 4 for \$3.55; 12 for \$9.50. Quick crop, 4 to 5 ft., \$2.90 each; 2 for \$5.50; 6 for \$15.90. (Plant two or more for pollination.)



NANKING CHERRY

7F19 — (*Prunus Tomentosum*) Fine spreading, dwarf growing (8 to 10 ft.) Japanese cherry with lovely shell pink buds, delicate white blooms and bright red cherries—delicious to eat and fine for cooking. Perfectly hardy. Beautiful and ornamental for home gardens. Bearing age, 3 ft., \$1.95 each; 2 for \$3.70. 1 to 1½ ft., 75c each; 3 for \$1.95.



GOOSEBERRIES

CHAMPION 7F20—Dependable; large fruiting; vigorous growing bright green fruit that turns gold when ripe. 2 yr., 75c each; 3 for \$1.95; 6 for \$3.60. 3 yr. fruiting age, 90c each; 3 for \$2.45; 6 for \$4.65.

RED JACKET 7F21—Large, red berries; sweet when ripe, delicious for pies, sauces, jellies and cooking. 2 yr., 75c each; 3 for \$1.95; 6 for \$3.60. 3 yr. fruiting age, 90c each; 3 for \$2.45; 6 for \$4.65.



CURRENTS

RED LAKE 7F22—Recommended for big crops, extra large red fruit easy to pick. Makes beautiful, fine flavored jelly. 2 yr., 65c each; 3 for \$1.75; 6 for \$3.20. 3 yr. fruiting age, 85c each; 3 for \$2.40; 6 for \$4.50.

WILDER 7F23—The favorite currant for years. Big, bright red berries. Vigorous grower and heavy producer. 2 yr., 55c each; 3 for \$1.35; 6 for \$2.40. 3 yr. fruiting age, 75c each; 3 for \$1.95; 6 for \$3.60.



Professor Hansen's BUSH CHERRIES

7F24 — Dwarf quick bearing, attractive shrub-like bearing, with meaty plum-like fruits the size of cherries. Heavy yielding hybrids. Grow into beautiful compact flowering bushes about 4 ft. tall. A fine, ornamental shrub with abundance of fruit for eating and cooking. 3 to 4 ft. bearing age, \$1.00 each; 3 for \$2.70. 2 ft. size, 60c each; 3 for \$1.50; 10 for \$4.50.

HUGE HYBRID BLUEBERRIES



RASPBERRIES

Cumberland

8F1—(Black Raspberry)—The most popular variety for years. Select, high-yielding, large fruiting strain. **10 for \$1.35; 25 for \$2.75; 50 for \$4.50; 100 for \$7.50; 500 for \$28.75; 1,000 for \$49.00.**

Bristol

8F2—(Black Raspberry)—Winning National acclaim as the most dependable and disease resistant black raspberry. Plants are vigorous, healthy and most productive. Large, glossy-black berries are unexcelled for eating, and cooking. **5 for 85c; 10 for \$1.40; 25 for \$2.75; 50 for \$4.25; 100 for \$8.25; 500 for \$29.50; 1,000 for \$56.00.**

Everbearing Indian Summer

8F3—(Red Raspberry)—Our finest spring and fall bearing raspberry. Large, sweet fruit of highest quality. Very popular. Extra select 1st grade plants. **5 for \$1.15; 10 for \$2.00; 25 for \$4.50; 50 for \$7.95; 100 for \$14.50; 500 for \$57.50.**

Quick Crop Indian Summer

8F4—Jumbo plants. **5 for \$1.65; 10 for \$2.95; 25 for \$6.65.**

Giant Latham

8F5—(Red Raspberry)—Universally rated the best, big, high quality variety. Extra select 1st grade plants. **10 for \$1.65; 25 for \$3.75; 50 for \$7.00; 100 for \$11.50; 500 for \$47.50.**

Quick Crop Latham

8F6—Larger size, stronger rooted. **5 for \$1.45; 10 for \$2.60; 25 for \$5.75.**

September

8F7—(New Everbearing Red Raspberry)—An outstanding variety that fruits ahead of Latham in spring and several weeks ahead of Indian Summer in the fall. Enormous crops of big glowing red berries with sweet flavor. Plants increase each year. **3 yr. bearing age, 3 for 98c; 6 for \$1.85; 12 for \$3.50; 25 for \$6.95.**

All Season Raspberry Patch

10 Cumberland, early black.....	\$1.35
10 Indian Summer, red.....	2.00
10 Latham, giant red.....	1.65
10 Bristol, late black.....	1.40

Catalog value.....\$6.40

8FG8 labeled **40 for \$5.35**

These big, luscious, marble size U. S. Dept. of Agri. hybrids are so good for eating fresh or delicious in pies, preserves and canned or frozen. The attractive shrub-like plants bear large clusters of mild, sweet fruit, easy to pick. They require no spraying and it is easy to grow blueberries if you make the soil acid and mulch heavy with peat, saw dust, oak leaves or any organic matter. A heavy mulch is better than cultivation. If soil is sweet or alkaline mix thoroughly with aluminum sulphate. We send sufficient aluminum sulphate with each order for

WEYMOUTH— 8F9 — Improved early ripening hybrid.

STANLEY — 8F10 — Excellent midseason ripening hybrid.

PEMBERTON — 8F11 — Recommended, late ripening hybrid.

Blueberry Prices

Plant 2 or more for cross-pollination. Your choice of 3 varieties listed.

Well branched, blooming size.	Each	2	4	6	12
GOOD, 2 yr., 9 to 12 inch	.95	1.69	3.10	4.25	7.98
BETTER, 3 yr., 12 to 18 inch	1.30	2.35	4.40	6.25	11.90
BEST, 4 yr., 18 to 24 in. quick crop, bigger, older plants	1.85	3.50	6.65	9.60	17.95

planting 1st year. Plant no less than two varieties for pollination. The plants grow for a life time and have handsome glossy foliage that changes red, gold and orange in fall. Beautiful pink-tinged white fragrant blooms on compact bushy plants make blueberries ideal for hedges or landscaping your yard. Hardy throughout U. S. A. You will get more and larger fruit if the old canes are pruned so the plants keep new shoots coming. On good blueberry land a gross income of \$1,200 per acre selling wholesale is the average income.

ACID PEAT MOSS FOR BLUEBERRIES — 8PM30 — Blueberries prefer acid soil with abundance of organic matter as peat. Highest Horticulture Acid peat, especially recommended. **\$1.00 per bag; 3 bags \$2.50.**

ALUMINUM SULPHATE — 8AS31 — Mixed with peat helps to grow giant blueberries. One pound enough for 2 to 4 plants per year. **40c pound; 5 pounds \$1.75.**

BIG BEAUTIFUL PEONIES

EXPERTLY CHOSEN • GRAND BLOOMS TO DELIGHT YOU FOR MANY YEARS

Young, thrifty, clean 3 to 5 eye plants of high scoring varieties tested and rated by American Peony Society members.

MONSIEUR MARTIN CAHAZAC

8P12—(The Famous Black Peony)—Darkest, nearest black peony grown. Beautiful, deep crimson-maroon, fully double blooms. **\$1.65 each; 3 for \$4.65.**

LADY ALEXANDER DUFF

8P14—Huge, fragrant apple blossom pink. Changing to white. **95c each; 3 for \$2.55.**

SOLANGE

8P15—Beautiful salmon-beige like creamed coffee. **\$1.45 each; 3 for \$3.95.**

MONS JULES ELI

8P16—Extra large, deep glowing pink shaded crimson. **95c each; 3 for \$2.55.**

PRIMEVERA

8P17—Creamy-white collar, golden-yellow center. **\$1.50 each; 3 for \$4.20.**

INSPECTOR LAVERGNE

8P18—Bright crimson, beautifully frilled center petals. **\$1.35 each; 3 for \$3.80.**

Memorial Day Peonies

Dependable, early blooming, free flowering, most planted commercial varieties. Usually in flower before Memorial Day.

FELIX CROUSSE — 8P20 — Large, globe-shaped; red. **79c each.**

EDILUS SUPERBA — 8P21 — Big, rosy-pink, silver reverse. **79c each.**

FESTIVA MAXIMA — 8P22 — Ivory-white, crimson edge. **79c each.**

Memorial Day Peony Special

8PG23 — One each Felix Crousse, Edilus Superba and Festiva Maxima. Regular \$2.37 catalog value.

3 for \$1.95

Big Beautiful Peony Garden

8PG19— One each of six varieties listed at right, each labeled. *Monsieur Martin Cahazac; Lady Alexander Duff; Solange; Mons Jules Eli; Primevera; Inspector Lavergne;* Certified \$7.85 catalog value.

All 6 for \$6.65

Oriental POPPIES

Extra choice varieties with brilliant blooms large as coffee cups (often larger). In late spring their colors are without equal.

BEAUTY OF LIVERMORE

8P24— Superb, big, free flowering, dark red; black center. **69c each; 3 for \$1.75.**

BARR'S WHITE

8P25— Large, healthy, pure white and shiny black spots. **80c each; 3 for \$2.15.**

ORIENTAL POPPY GARDEN—8PG29— One each of 5 varieties listed: Beauty of Livermore, Barr's White, Salmon Glow, Crimson Pompon, Mrs. Perry. **\$3.67 catalog value. All 5 for \$2.85.**

SALMON GLOW

8P26— Exceptionally large, prize winning double orange. **69c each; 3 for \$1.75.**

CRIMSON POMPON

8P27— Double pompon shaped, blood-red. Unusually attractive. **80c each; 3 for \$2.15.**

MRS. PERRY

8P28— Beautiful rich pink blooms. Hardy free flowering. **69c each; 3 for \$1.75.**



BLUEBERRY SPECIAL

9FG1—Save with this Spring Hill offer. We give you 1 *Weymouth* (early), 1 *Stanley* (mid-season), 1 *Pemberton* (late). All large, bushy 3 year 12 to 18 inch plants.

All 3 for **\$3.29**

Plus FREE Aluminum Sulphate to make soil acid



ORIENTAL ORCHID

9B6 — New, beautiful imported variety. Strong 12 to 15 inch stems bear many long lasting orchid-like flowers. Perfectly winter hardy. Pot for indoor blooms. Jumbo size bulbs. 39c each; 3 for \$1.00.



ORIENTAL POPPY GARDEN

9PG7—One each of 5 varieties listed and described page 8. *Beauty of Livermore*, *Barr's White*, *Salmon Glow*, *Crimson Pompon*, *Curtis Giant Salmon Pink*. \$3.67 catalog value. All 5 for \$2.85.



CLUMP BIRCH

9T8—Distinguished appearing trees with attractive white bark and handsome golden autumn foliage. 3 or more stems per clump. 3 yr. clump plants as pictured. 3 to 4 ft. tall, \$2.20 each. 4 to 5 ft., \$3.60. Single stem birch see 1c sale page 16.



HARDY PRIVET HEDGE

9H9—(*Amur River*) Compact, fast growing hardy variety, popular in the North. Clip to any height. Sturdy, field grown plants about 1 foot tall. Set 1 ft. apart for dense hedge. Larger sizes pg. 13. 10 for \$1.79; 25 for \$2.98; 100 for \$9.95.



LYNWOOD GOLD

9K10 — (*Forsythia*) New imported Irish variety, 2nd time offered at popular prices. Graceful, growing plants smothered each spring with yellow flowers. Pot plants, 65c each, 3 for \$1.60. 2 ft., \$1.15 each; 3 ft., \$1.65 each.



EARLIEST BLOOMING PEONIES

(*Officinalis*) Earliest to bloom of all good peonies. Renowned for many years because they are dependable, free flowering, and desirable in Northern latitudes. Attractive, low, compact plants generally filled with blooms ahead of Memorial Day as far North as Milwaukee. Plant this fall for blooms next spring. All big 3 to 5 eye Holland imported plants.

Red *Officinalis Rubra Plena*—9P2—98c each; 3 for \$2.75

White *Officinalis Alba Plena*—9P3—\$1.25 each; 3 for \$3.45

Pink *Officinalis Rosea Plena*—9P4—\$1.19 each; 3 for \$3.30



Officinalis Peony Garden

9PG5—1 each double white, double pink and double red. Regular \$3.42 value.

3 for **\$2.75**



MOCK ORANGE

9K11 — (*Philadelphus Virginialis*) — Everblooming with big double, thick, waxy-white blooms. Continuously throughout the season. Hardy semi-dwarf shrubs. New low prices. 12 or 18 inch, 48c each; 3 for \$1.25. 2 to 3 ft. size, 90c each; 3 for \$2.45.



5-N-1 APPLE TREE

9F12—(Fruit all season)—5 kinds of apples grafted on each tree. One tree will yield ripe apples from July to November. Guaranteed assortment of the finest varieties. Interesting, beautiful lawn trees. Big, 4 to 5 ft. size, \$2.95 each; 3 for \$8.65.



Beautiful, Easy to Grow LILIES HARDY WINTER VARIETIES

King Alfred DAFFODIL

1081—Still considered the finest of all daffodils. Immense, fragrant, perfect flowers of uniform yellow carried on tall stems. Beautiful, long lasting cut-flowers perfectly hardy, do not have to be taken up and replanted. Bulbs multiply. Plant this fall for beautiful blooms next spring. Excellent for forcing or bedding outdoors.

Jumbo double nose giant size bulbs (produce the largest and most blooms). 2 for 50c; 5 for \$1.00; 10 for \$1.75; 25 for \$3.98.

Blooming size No. 3, round size bulbs, 2 for 29c; 5 for 60c; 10 for \$1.00; 25 for \$2.35.

Large Trumpet Daffodil Mixture 1082—Save money if you want an abundance of flowers and do not care for variety names. A guaranteed hand made mixture of large trumpet varieties only. Do not confuse with ordinary small flowering mixtures. All good outdoor hardy varieties at lowest prices.

Double nose, medium blooming size bulbs. 5 for 59c; 10 for 95c; 25 for \$2.25.

Dream Lily (Pictured page 11)
1089 — (*Phillippenseuse Formosanum*) — Creamy-white flowers, with transparent green throats resemble Easter lilies in form but are much larger. The delicious fragrance and fresh beauty of this wonderful new lily will add greatly to the beauty of your summer garden. Hardy bulbs multiply. *Imported 5 to 6 inch bulbs. 55c each; 3 for \$1.35; 6 for \$2.50.*

Rosy China Lily (Pictured page 11)
10810 — (*Speciosum Rubrum*) — Considered by many as the loveliest of all pink lilies. Sparkling bright pink petals edged white and sprinkled with red dots. An abundance of blooms from July into autumn of good size, great substance and depth of color. One of the most used and finest lilies for cutting. *Select 6 to 8 inch bulbs, 60c each; 3 for \$1.50; 6 for \$2.75.*

Famous Regal Lily (Pictured page 11)
10811—America's favorite and most popular hardy lily. Great profusion of blooms often 15 to 25 on a stem throughout June and July. Beautiful long, white blooms flushed pink with creamy-gold throats and delightful perfume. Hardy bulbs multiply. *Blooming size, 5 to 6 inch, 2 for 50c; 4 for 89c; 10 for \$1.98. 8 to 9 inch, 60c each; 3 for \$1.50; 10 for \$4.65.*

Double Tiger Lily (Pictured page 11)
10812—(*L. Tigrinum Flore Plena*)—Considered the finest and most beautiful double lily in existence. Rich, salmon orange petals attractively recurved and handsomely spotted. Hardy bulbs. *5 to 6 inch blooming size, 45c each; 3 for \$1.25; 6 for \$2.35.*

Giant Olympic Hybrids (See page 11)
10818—(*Centifolium*)—One of the greatest of all lilies for hardiness, vigorous growth, huge size, exquisite form, delightful fragrance, lovely colors and gracefulness. There is a pleasing variation in style and shape of blooms as well as colors which include, icy green, creamy yellow, soft pink, chocolate, wine and white. *Huge 7 to 9 inch trumpet like blooms through July and August. 5 to 6 inch bulbs, 49c each; 3 for \$1.35; 6 for \$2.35.*

Crimson Beauty Lily (Picture pg. 11)
10814—(*Umbellatum Splendidum*)—Extremely free flowering with big, upright orange-red blooms on 18 to 24 inch stems. Often 25 flowers on a stem; bulbs are hardy and easy to grow. *Blooming bulbs, 7 to 8 inch, 59c each; 3 for \$1.50; 6 for \$2.70.*

Coral Lily (Pictured page 11)
10815—(*Tenuifolium*)—A striking early flowering lily with reflexed petals that glow as if waxed. Greatest abundance of small, vivid scarlet-red blooms fine for bouquets and flowering borders. Grows well and bulbs multiply. *Extra large 4 to 5 inch imported bulbs, 39c each; 3 for \$1.00; 6 for \$1.85.*

Hardy Amaryllis Halli (See page 11)
10816—(*Magic Lily*)—The only perfectly hardy amaryllis grown. Botanically called *Lycoris Squamigera*. Surprisingly beautiful with clusters of 5 to 12 large pink blossoms on a stem. The attractive foliage dies in July. A few weeks later as if by magic the flower stems seem to pop out of the ground to a height of 2 ft. Easily grown bulbs multiply each year. *4 to 5 inch bulbs, new low price, 39c each; 3 for \$1.00; 10 for \$2.95. Large, 6 to 7 inch blooming size, 49c each; 3 for \$1.25; 6 for \$2.25.*

Madonna Lily (Pictured on page 11)
10817—(*Cascade Strain Candidum*)—It is with great pride we offer this new improvement of the oldest known early blooming white lily. Highly resistant to disease. Larger fragrant spikes with more substance and purity of color. Bulbs increase naturally. *We send large 6 to 7 inch circumference bulbs, extra low price, 59c each; 3 for \$1.50. 12 for \$5.75.*

HARDY LILY GARDEN SPECIAL	
1 Dream Lily, 5 to 6 inch	\$.55
1 Rosy China, 6 to 8 inch	.60
1 Regal Lily, 8 to 9 inch	.60
1 Double Tiger, 5 to 6 inch	.45
1 Crimson Beauty, 7-8 in.	.59
1 Coral Lily, 4 to 5 inch	.39
1 Magic Lily, 6 to 7 inch	.49
1 Madonna, 6 to 7 inch	.59
1 Olympic Hybrid, 5-6 in.	.49
Catalog Value	\$4.75
\$3.65	



Diana Kasner 1083—Creamy yellow collar, large fluted yellow cup with blood red frilled edge. Free flowering, fine for show and cutting. Medium, double nose, blooming size bulbs. *3 for 50c; 6 for 79c; 25 for \$2.95.*



Helios 1084—Bright buttercup-yellow overlapping collar of good substance and shape. Darker golden cup that changes to orange. Medium double nose, blooming size, *3 for 50c; 6 for 79c; 25 for \$2.95.*



Laurens Koster 1085—Tall, graceful stems bear heads of 5 to 6 large flowers with solid creamy-white collar and lemon-yellow cup. Medium double nose, blooming size bulbs, *3 for 50c; 6 for 79c; 25 for \$2.95.*



Minister Talma 1086—Uniform golden-yellow shaped like a flying golden spur. Strong growing, free flowering, fine, early forcing variety. Medium double nose, blooming size bulbs, *3 for 59c; 6 for 90c; 25 for \$3.50.*



Actaea 1087—The largest poeticus in existence. Immense white collar and yellow fluted cup, broadly margined with bright red. Medium, double nose, blooming size bulbs, *3 for 59c; 6 for 90c; 25 for \$3.50.*



Cheerfulness 1088—Clusters of double blooms with creamy-white collar and a full, double center of pale yellow distinct and decorative. Double nose, medium blooming size, *3 for 45c; 6 for 75c; 25 for \$2.75.*



DOUBLE TIGER

11B1—Finest double lily. (Description opposite page). **45c each; 3 for \$1.25.**



OLYMPIC HYBRIDS

11B2—(Giant Olympic) Great profusion, huge size. (Description opposite page.)

49c each;
3 for \$1.35



ROSY CHINA LILY

11B3—Loveliest of all pink lilies. (See opposite page) **60c each; 3 for \$1.50.**



DREAM LILY

11B4—(Phillipense) Huge blooms. (Description opposite page). **55c each; 3 for \$1.35.**



CRIMSON BEAUTY

11B5—(Umbellatum Splendidum) (Description see opposite page). **59c each; 3 for \$1.50.**



MADONNA LILY

11B6—(Cascade strain, Candidum) (Description opposite page). **59c each; 3 for \$1.50.**



CORAL LILY

11B7—(Tenuifolium) Early blooming. (See opposite page). **39c each; 3 for \$1.00.**

PLUMES OF PARADISE

(*Liatrix Scariosa*) Unusual hardy perennials that soon establish large clumps and produce an abundance of 3 ft. spikes during late summer. Ideal for cutting. Choice of **11P10**—Royal Purple, **11P11**—Snow White, **50c ea.**; **2 for 89c; 10 for \$3.85.**

4 for \$1.60



HARDY AMARYLLIS HALLI

11B8—(Magic Lily) Cluster of 6 to 12 large blooms on strong 2 to 3 ft. stems. New low prices. (Description opposite page).

39c each; 10 for \$2.95
3 for \$1.00



REGAL LILY

11B9—America's favorite, so dependable. (Description opposite page.) **2 for 50c; 4 for 89c.**





GREAT RED EMPEROR

12B1—(*Tulipa fosteriana*) Magnificent vermilion-scarlet of tremendous size and remarkable substance. The large, rounded petals, often 6 inches long, open like a big oriental poppy disclosing a handsome black center bordered with yellow; often large as dinner plates. Unquestionably the largest and brightest red tulip in existence. A bed of red Emperor is absolutely startling, you'll love the glamor it gives your garden. It blooms a week before most tulips and is not as tall, height about 18 inches.

New low prices. 1st size bulbs, 5 for 60c; 25 for \$2.39; 100 for \$9.45.

10 for 98¢



Large, Double, Cut-flower Hardy Chrysanthemum COLOR COLLECTION

12C2—Here at Tipp City we produce over a half million chrysanthemums each year. Hundreds of the best new varieties, acres of plants, millions of blooms. We offer only the better recommended, cut-flower varieties. All are guaranteed hardy, large, double, early and profuse blooming. One each of following colors, 5 for \$1.35. All big, sturdy field grown plants. Shipped with tops broken off.

- Exhibition red.
- Exhibition white.
- Exhibition yellow.
- Exhibition bronze.
- Exhibition pink.

5 for \$1.35



Old Fashioned Bleeding Heart 12P3 — (*Dicentra Spectabilis*) — Truly romantic, heart-shaped flowers of great beauty and gracefulness. Lovely in mixed bouquets. Tall growing with largest flowers. Grows best in semi-shade producing its profusion of blooms for several weeks in late spring. 69c each; 3 for \$1.95; 6 for \$3.75.

Everblooming Bleeding Heart 12P4 — (*Dicentra Exima*) — Dwarf plants grow about 1 ft. tall with finely cut, fern-like foliage that contrasts beautifully with artistic sprays of pink blooms. Flowers continuously all summer. 60c each; 3 for \$1.55; 6 for \$2.95.

BLEEDING HEART GARDEN SPECIAL 12PG5 — 2 Old Fashion Bleeding Heart, 2 Everblooming Plumy Bleeding Heart. Regular \$2.50 value.

All 4 for \$2.15



ZERO GLADIOLUS

12P6 — (*G. Byzantinus*) Strong 30 inch stems well filled by 6 to 12 beautiful medium size purple flowers with white line. Recommended for trial, bulbs have wintered well in Northern Michigan the last few years. Bulbs increase. 3 for 60c; 6 for 98c; 25 for \$3.50.



SERVICE BERRY

12K7 — (*Amelanchier*) Useful for jellies, pies and eating. Also one of our best berry producing shrubs for birds and wild life. Beautiful white blooms in early spring with large red fruit clusters in summer. Perfectly hardy shrub. Bearing age, 2 to 3 ft., 75c each; 3 for \$1.95; 6 for \$3.85.



SNOWDROPS

12B8 — (*Galanthus Nivalis*) — Loved for its extra early, graceful, white blooms each spring. Hardy bulbs multiply and last for years. Grow best in partial shade outdoors. Easy to flower in pots during winter indoors. 1st size, guaranteed to bloom bulbs, 5 for 39c; 10 for 65c; 25 for \$1.25; 100 for \$4.95.



GRAPE HYACINTHUS

12B9 — (*Muscari, Heavenly Blue*) — Dainty and beautiful, early spring flowering bulbs of richest gentian blue. Perfectly hardy bulbs increase and will grow in sun or shade. Splendid in the garden, also for winter flowering in the house. Top size jumbo bulbs, 10 for 69c; 25 for \$1.50; 50 for \$2.48; 100 for \$4.90.



Virginia BLUE BELLS

12B10 — (*Mertensia*) — Hardy, permanent plants to flower in your garden each spring. Survives best in shady locations. Each plant is filled with clusters of clear blue pinnacles about 1 inch long. One of our earliest and longest blooming spring bulbs. Blooming size bulbs, 29c each; 3 for 69c; 6 for \$1.15; 12 for \$1.95.



Dragon

12P11 — A unusual Chartreus green cre... above mid black fall charming on fragrant, strong are used for expensive sages. Bulbs hardy, 49c for \$1.35.

State _____
 City _____
 Street _____
 From _____

USE
 LETTER
 POSTAGE
 HERE

NURSERIES

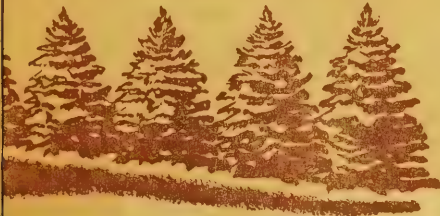
and Consultants

TIPP CITY, OHIO

(MIAMI COUNTY)

349

PLANTS AND SUPER MARKET



Catalog Number	Size	Price for 5	Price for 10	Price for 25	Price for 100
E6	8-10 in.	1.35	2.25	4.95	17.50
E7	5-7 in.	2.25	3.95	9.35	35.00
E8	8-10 in.	2.35	4.40	10.60	39.95
E9	4-6 in.	2.25	3.95	9.35	35.00
E10	6-8 in.	2.35	4.40	10.60	39.95
E11	6-8 in.	2.50	4.75	11.25	42.50
E12	3-6 in.	.90	1.45	3.35	12.50
E14	3-6 in.	.85	1.40	3.20	12.00
E15	3-6 in.	.85	1.40	3.20	12.00
E16	5-7 in.	1.00	1.75	3.95	15.00
E17	5-7 in.	.90	1.45	3.35	12.50
E18	4-6 in.	1.00	1.75	3.95	15.00
E19	8-10 in.	2.35	4.40	10.60	39.95
E20	8-10 in.	2.35	4.40	10.60	39.95

FOLD ON THIS LINE

FOLD ON THIS LINE



BLEEDING HEART

OB1 — (Dicentra Spectabilis) Hardy plants last and bloom for years, in well drained shady location. Profusion of exquisite pink blooms lovely for bouquets. 2 yr. blooming size plants, 69c each; 3 for \$1.95.

6 for \$3.75

Spring Hill's Guarantee

HONEST—RELIABLE TO YOU A SAFE GUARD

We Guarantee our nursery stock to be exactly as represented—highest quality—government inspected and to arrive in good growing condition. Any plants found otherwise upon arrival will be replaced FREE. Spring Hill's quality plants will grow, bloom, and produce if given intelligent handling—proper planting and reasonable care.

REPLACEMENTS—Weather conditions beyond our control; nevertheless Spring Hill agrees to replace at one-half the original purchase price any plants which fail to grow if notice is made three months after delivery of your order. Our liability cannot be greater than the original purchase price. Please report unsatisfactory merchandise as soon as possible. It is our sincere desire to please. SATISFACTION GUARANTEED.

TOM KYLE, President



FRAGRANT PINK SNOWBALL

OBK2 — (Viburnum Carleii) Brilliant rose-red buds open exquisite shell-pink. Tight, snowball shaped blooms are intensely fragrant, filling the entire yard. Special low price, 10 to 15 inch size, 2 for 98c.

6 for \$2.50

REMITTANCE . . .

Our terms are cash with order. Money should be sent by check, postal money order, express money order, draft, or registered mail. No C. O. D. orders.

WAR STAMPS ACCEPTED: Mail War Stamps in payment for your plant order from Spring Hill. In this way Uncle Sam will have the money; YOU HAVE the plants; Spring Hill will purchase the GOVERNMENT BONDS. Spend your money where it will do the most good.

IMPORTANT—Please use separate sheet of paper for all correspondence and questions requiring an answer, with your name and address to insure a prompt reply.

You will be doing your friends and Spring Hill a favor if you write the names and addresses of anyone who will be interested in receiving a copy of this catalog. Thank you.

FOLD ON THIS LINE

ORDERS ACKNOWLEDGED. We acknowledge all orders by letter when received. When we ship your order, your original order sheet will be returned to you with the merchandise ordered, for checking, IN EVENT OF ANY ERROR, CLAIM OR ADJUSTMENT it will be necessary for you to return your original order with your letter. If your order is not filled completely you will be advised whether or not balance will follow later or amount of any shortage refunded to you. Remember we will be unable to correspond with you about an order shipped without having your original order returned to us. **IMPORTANT — PLEASE ADD 10% FOR PACKING AND TRANSPORTATION ON ALL ORDERS.**

If you do not include postage your order will be shipped by express collect or we will bill you for the postage.

Most orders can best be shipped by parcel post if not too large for the mail.

Ohio customers please add 3% Ohio Sales Tax.

FOLD ON THIS LINE

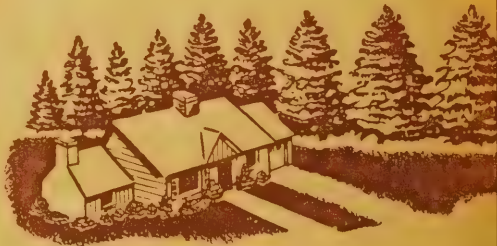
SPRING HILL

Horticulture Specialist



FOLD ON THIS LINE

VISIT OUR GROWING FARM



LOW PRICES FOR SMALL PLANTING EVERGREENS

It's economical, it's easy, it's interesting to plant and grow your evergreens. Excellent varieties for hedges, windbreaks, Christmas trees, wood lots and landscaping.

American Arbor Vitae
Globe Arbor Vitae
Pyramid Arbor Vitae
Golden Blata A. N.
Juniper Pfitzeriana
Blue Pfitzeriana
Spruce, Black Hill
Spruce, Colorado
Spruce, Norway
Pine, Austrian
Pine, Scotch
Pine, Dwarf Mugh
Taxus Cuspidata
Taxus Hicksi



RED LEAVED BARBERRY



SPIREA VAN HOUTTEI



BUSH HONEYSUCKLE



Best Hardy HEDGES PLANT LIVING FENCES for ECONOMY and BEAUTY

50 or more plants of a size and variety at 100 rate.

RED LEAVED BARBERRY

13H1 — (*B. Thunbergi Atropurpurea*) A plant of distinction. Prized for its rich, lustrous, red foliage all season and scarlet fruit through winter.

9 to 12 inch, 10 for \$2.40; 25 for \$5.50; 100 for \$19.75.
12 to 18 inch, 10 for \$4.79; 25 for \$9.95; 100 for \$37.50.

BUSH HONEYSUCKLE

13H2 — (*Lonicera Tartarica Rosea*)—Extra hardy, rapid growing, tall, spreading plants up to 10 feet. Grows well in sun or shade. Filled with rose-red flowers in early summer followed by red berries that make excellent food for birds. Hardy in Northern states. Plant 2 ft. apart for low, clipped hedge. Plant 3 to 4 ft. apart for tall, informal screen.

18-24 in., 10 for \$2.95; 25 for \$6.65; 100 for \$23.50.
3-4 ft., 10 for \$8.50; 25 for \$19.50; 100 for \$75.00.

POPULAR HARDY BRIDAL WREATH

13H3 — (*Spirea Van Houttei*)—The opposite picture displays a colorful untrimmed hedge of bridal wreath. The strong, hardy, dependable plants with gracefully arching branches are filled with white blooms each spring. Easy to grow, does well in sun or shade. Marvelous for hedges, 5 to 7 ft. tall.
9-12 in., 10 for \$1.75; 25 for \$2.90; 100 for \$8.95.
12-18 in., 10 for \$2.25; 25 for \$4.95; 100 for \$17.50.
2-3 ft., 10 for \$5.95; 25 for \$13.75; 100 for \$49.50.

AMUR RIVER NORTH PRIVET

13H4 — (*The hardest privet hedge*) Beautiful, upright, fast growing, compact hedge. Ideal for clipped hedge. Plant one foot apart. Most popular privet in the North.
9-12 in., 10 for \$1.75; 25 for \$2.90; 100 for \$8.95.
18-24 in., 10 for \$2.65; 25 for \$5.50; 100 for \$19.50.
2-3 ft., 10 for \$3.50; 25 for \$7.50; 100 for \$27.50.

(Small size see color picture page 9)

Excellent New Hardy Early Flowering CHRYSANTHEMUMS

13C5—The varieties we sell are all the new, early blooming, large double flowering, healthy and hardy. Guaranteed improved varieties sold by color at low prices. One each Pink, Red, Yellow, White, Bronze and Violet like above picture. Fully guaranteed. Improved, free flowering, hardy strains that will bloom for you next year. Big, field grown clumps shipped with tops broken off. (Unlabeled).

6 for \$1.98



LEAD IRIS

Lovely and novelty. to jade-sts poised id-night alls. The orchid-like, nall blooms by florists ivisive cor- ulbs are c each; 3



SPOON MUMS

13C11—All have large blooms with long, narrow petals that are spoon shaped at tips. All varieties are early blooming, hardy and excellent for bouquets. Choice of red, bronze, yellow, white and purple. Big field clumps with tops broken off for shipping. 55c each; 3 for \$1.35; 6 for \$2.50.



GARDENIA

13C12 — (*Veitchi*) — Fragrant, free blooming variety. Excellent house plants. Enjoy their expensive and exquisite fragrant, waxy, white blooms. Not winter hardy north of Norfolk, Va. Growing instructions and plant food sent with each order. 8 to 10 inch size, 59c each; 3 for \$1.55. Big 12 to 15 inch size, \$1.75 each; 3 for \$4.95.



ENGLISH MUMS

13C14— Finest, large, double flowering varieties for exhibiting. All good vigorous growing, healthy, free flowering. We offer the best of several hundred varieties tested. Choice of red, pink, white, orange, yellow and purple. Big field clumps with tops broken off for shipment. 55c each; 3 for \$1.35; 6 for \$2.50.



CRANBERRY

13K15 — (*Viburnum Americana*) A handsome ornamental shrub. Pure white flowers in late spring; neat, clean foliage on bushy plants. Red fruit clusters on plants all winter for bird food. 12 to 15 inch, pot plants, 50c each; 3 for \$1.25. 2 to 3 ft., 95c each; 3 for \$2.75.



Purple Leaf PLUM

13K16 — (*Prunus Newport*) In spring it has myriads of light pink blooms scattered like thousands of stars through the brilliant red foliage. Leaves stay red all season. Hardy and colorful, grow 10 to 15 feet tall. 3 to 4 ft. size, \$1.65 each; 2 for \$2.95. 5 to 6 ft., \$2.75 each; 2 for \$5.20.



CROWN IMPERIAL

14B1—The large trusses of vivid orange-scarlet bell-shaped blooms next spring, grow up to 3ft. tall and attract immediate attention. Plants are hardy and bloom for many years. *Large imported, blooming size bulbs, 89c each; 3 for \$2.50.*



HARDY BUTTON MUMS

14CG2—Compact, double, button-like flowers in great profusion, unsurpassed. Finest hardy varieties for cutting and garden beauty. *Choice of Red, Bronze, Pink, Yellow, White. Big field clumps with tops broken off for shipping, 50c each; 3 for \$1.25; 10 for \$3.95.*



IMPROVED CHINESE LILAC

14K3—(*Rothomagensis*)—Majestic flowers in greatest profusion fill neat, compact, low growing plants for several weeks each spring. Distinctly beautiful, highly recommended. *2 yr., 18 inch, 60c each; 3 for \$1.55. 2 to 3 ft., 90c each; 3 for \$2.45.*



HOLLY LEAF MAHONIA

14E4—(*Mahonia Aquifolia*)—Glistening green, hollyleaf foliage all winter. Wonderful for decorating, very hardy, dwarf growing landscape shrub. *Baby 6 inch size, 40c each; 2 for 75c; 5 for \$1.75. 1 ft. size, \$1.65 each; 2 for \$2.95. 15 to 18 inch, \$3.75 each.*



NEW DWARF CUSHION HARDY ASTER GARDEN

14PG5—One each 5 varieties described on page 15 Pacific Amaranth, Niobe, Lilac Time, Countess of Dudley, Little Red Boy.

5 for \$1.98



TALL CUT FLOWER HARDY ASTER GARDEN

14PG6—One each color as pictured Red, White, Blue, Violet, Pink. Big, field clumps.

All 5 for \$1.65

Hardy PHLOX Garden Special

14PG7—Garden of 6 colorful, giant flowering hardy phlox as pictured A, B, C, D, E, F. One each, big field grown No. 1 plants (unlabeled).

6 for \$1.79





Tom Thumb Iris

Miniature darlings that grow 6 to 12 inches tall. Clumps often have over 100 blooms in early spring. Choice of **YELLOW**—15P1, **VIOLET**—15P2. **35c each; 6 for \$1.69. SPECIAL**—15PG3—One each, 2 for 59c.



Black Magic Iris

15P4—Exquisite, rich velvety-purple (nearly black) blooms with satin sheen. Blooms in early spring and again in the fall. Strong blooming size plants at a special low price. **60c each; 3 for \$1.69.**



Star of Bethlehem

15P5—(*Ornithogalum umbellatum*) Crispy white star-shaped flowers on 8 inch stems each spring. Winter hardy bulbs multiply and are easy to grow outdoors. **Top size, 3 for 30c; 6 for 50c; 12 for 95c.**



Giant Flowering CROCUS

"SPRING'S 1ST COLOR"

(*Imported Holland Bulbs*)—One of the first flowers in spring; often blooms when late snows are on. Offered in separate colors and mixed. Plant them liberally in any nook, under shrubbery, in the lawn, also excellent for borders. Plant 3 to 4 inches apart, 2 to 3 inches deep. They multiply and last for years. Spring Hill's big imported bulbs produce more and large blooms. Easy to bloom indoors; just pot bulbs and set in window.

Giant blooming size 7 to 8 c.m. bulbs, choice of **BLUE**—15B17, **WHITE**—15B18, **PURPLE**—15B19, **YELLOW**—15B20, **STRIPED**—15B21.

6 for 49c • 12 for 85c
25 for \$1.50 • 100 for \$5.50

MIXED GIANT CROCUS SPECIAL

15BG22 —Mostly blue and violet. Giant blooming, 7 to 8 c.m. bulbs.

10 for 69c; 100 for \$4.50

20 for \$1.00

Superb Tall, Cut-Flower HARDY ASTERS

Easily grown, perfectly hardy, free blooming. Compact plants provide color through late summer and early fall. Plants can be divided and will grow for years without replanting. *Pictured on opposite page.*

(G) BLUE GEM

15P6—The deepest and richest violet-blue. Neat, compact growth. Awe-inspiring beauty. 3 ft. tall.

(H) BEECHWOOD CHALLENGER

15P7—Brilliant crimson-red. Free blooming, compact plants. Very striking.

(I) MT. EVEREST

15P8—The finest of all white hardy asters. Winner of many prizes.

(J) EVENTIDE

15P9—New, imported English variety. Large, bright, semi-double, sky-blue. Excellent.

(K) SUNSET

15P31—The best new pink in our fields. Neat, compact growing vivid sunset-pink.

Choice of above 5 hardy asters. Big, field grown clumps, **48c each; 4 for \$1.75; 12 for \$4.75.**

Cut-Flower Aster Special

15PG10—One each pictured page 14 (described above). G, H, I, J, K. (Big field grown plants.)

5 for \$1.98

Dwarf Cushion HARDY ASTERS

Free flowering, dwarf, mound-like plants are so filled with blooms you cannot see the foliage for many weeks through August and September. Wonderful for borders. *See color picture opposite page.*

LILAC TIME

15P11—Exquisite large, vivid lilac blooms in masses through Sept. and Oct. Height 1 to 1½ ft.

NIobe

15P12—Plants grow only 12 inches tall forming a lovely mound of white.

PACIFIC AMARANTH

15P13—Bright amaranth-violet; low bushy 1 ft. plants. New, recommended variety.

COUNTLESS OF DUDLEY

15P14—Vivid lilac-pink, compact 1 ft. plant. Outstanding color and class.

LITTLE RED BOY

15P15—Compact, globe-like 1½ to 2 ft. plants with brightest star-like flowers of China-red from early to late fall.

Choice of above 5 varieties dwarf, hardy asters, **48c each; 4 for \$1.75; 12 for \$4.75.**

Dwarf Aster Color Garden

15PG16—One each Red, White, Pink, Violet and Blue. Our choice of finest varieties.

5 for \$1.65

Colorful, Giant Flowering Hardy Phlox

They will bloom for you this summer and many more years. Dig every 3 years and divide; cut old flowers to prolong blooms; this also destroys seed. Plant 15 inches apart. Spring Hill's phlox are all new, giant-flowering varieties of medium height (florets often large as half dollars). No other hardy plant gives such a mass of mid-summer blooms.

(A) EVA FORESTER (Glowing pink)

15P23—Outstanding, large, vigorous; pink with white eye. Dainty, yet colorful.

(B) SAN ANTONIO (Fuschia red)

15P24—Intensely vivid eye-catching, velvety red. Highly recommended.

(C) JULY GLOW (Bright Red)

15P25—Brilliant big blooms with changing colors that glisten like rubies.

Price of six phlox described above (pictured on opposite page). Big, No. 1 field grown, **40c each; 3 for \$1.10; 12 for \$3.50.**

(D) PRIME MINISTER (White, red eye)

15P26—Extra large blooms of snow-white with vivid crimson eye. Always good.

(E) CAROLINE VANDENBURG (Lilac blue)

15P27—Huge, colorful lilac-blue (no magenta). Strong grower and bloomer.

(F) SALMON GLOW (Salmon orange)

15P28—Large florets and heads of rich rosy-salmon-orange.

PHLOX COLOR COLLECTION

15PG29—To keep varieties in balance Spring Hill makes this money saving offer. All big No. 1 giant flowering plants that will bloom next summer. One each Red, White, Blue and Pink unlabeled. (No broken collections).

4 plants for \$1.25

Red, White & Blue PHLOX GARDEN

15PG30—Selected from finest named varieties. One each, unlabeled.

3 for 98c



SALE

Spring Hill's Extra Value Page

1¢ Buys an Extra Article

Everblooming Hybrid Tea ROSES

16R2—All will bloom continuously for you next spring, summer and fall. Well branched 2 yr. field grown second each a different color. 3 for \$2.50.

SALE PRICE **4 for \$2.51**

Hardy PHLOX

16P3—Mostly the colorful varieties listed on page 14. Each a different variety and color. Enjoy their glorious array of rainbow colors. 3 for 98c.

SALE PRICE **4 for 99c**

Evergreen Clinging Wall VINE

16V4—(Euonymus Colorata)—Fast growing, hardy plants stay green winter and summer. Climbs trees, brick or concrete walls without support. Recommended. 2 yr. size, 85c each.

SALE PRICE **2 for 86c**

Red Leaf BARBERRY

16K5—Most colorful and satisfactory. Red foliage all season. 9 to 12 inch size, 3 for 98c. Get another for 1c.

SALE PRICE **4 for 99c**

APRICOTS

16F6—(Blenheim)—This is the sweet-flavored variety that is so popular for canning and makes a beautiful, low-broad tree. 2 yr. 3 ft. size, \$1.25 each.

SALE PRICE **2 for \$1.26**

Garden of Cushion MUMS

16C7—Guaranteed hardy, early blooming, dwarf varieties. Assortment of red, white, pink, yellow, bronze. Field clumps with tops broken off. 3 for \$1.50.

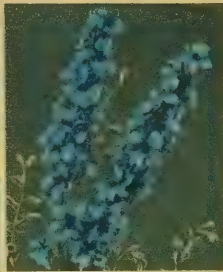
SALE PRICE **4 for \$1.51**



Golden Bell FORSYTHIA

16K8 — (Spectabilis) Improved giant flowering variety with deep, richer golden color. One of first shrubs to bloom in spring. 3 ft. size, \$1 ea; Get another for 1c.

Sale price, **2 for \$1.01**



Everblooming Dwarf DELPHINIUM

16P9 — (Blue Butterfly) Finest florist cut-flower strain. Lovely clear sky blue blooms continuously. Hardy, healthy, easy to grow plants, 2 yr. size, **2 for 55c**. Get another for 1c.

Sale price, **3 for 56c**



Chameleon or Polka Dot Tulips

16B10—(Ossi Oswaldi) Rare and beautiful. Opening white with petals edged cherry-rose. This color spreads through the large blooms, **3 for 39c**. Get another for 1c.

Sale price, **4 for 40c**



SHASTA DAISY Conqueror

16P11—Immense white flower, yellow centers, in great profusion. Excellent, long lasting bouquets through summer months. 2 yr. **2 for 48c**. Get another for 1c.

Sale price, **3 for 49c**



BLUE SPRUCE

16E12—(Picea Pungens Glauca) — Good blue spruce add to the value of property. Grows into tall specimen plants of perfect shape, 4 years old, 5-7 inch, **2 for 98c**. Get another for 1c.

Sale price, **3 for 99c**



Mallow Marvel HARDY HIBISCUS

16P14 — Largest blooming perennial, pink, red, white pastel colors (No choice of colors). Blooms throughout summer. Big plants, **2 for 50c**; Get another for 1c.

Sale price, **3 for 51c**



Hybrid Giant SWEET WILLIAM

16P15 — Select strain imported direct from Holland. Giant blooms, rainbow colors during May and June. 3rd year offered, amazing beauty. **3 for 75c**. Get another for 1c.

Sale price, **4 for 76c**



Lombardy POPLAR

16T16 — Stately, tall, narrow trees of rapid growth with glossy leaves that shimmer in sunlight. Use along driveways as tall screens or hedges. 2 yr., 4-6 ft., **90c**.

Sale Price, **2 for 91c**



Fragrant PINKS

16P17—(Dianthus Plumaris) (Highland Hybrids) Lovely sweet scented blooms of pastel colors during May and June. Big plants, **2 for 65c**. Get another for 1c.

Sale price, **3 for 66c**

Economy SHADE TREES



SENSATIONALLY LOW PRICES

Best Varieties. Outclassing all competition in small, straight, healthy trees.

- SILVER MAPLE** 16T18 (Acer Saccharinum) 5 to 7 ft., \$1.95 each... SALE PRICE **2 for \$1.96**
- HONEY LOCUST** 16T19—(Improved Thornless) 5 to 7 ft., \$2.25 ea. SALE PRICE **2 for \$2.26**
- TULIP TREE** 16T20 (Liriodendron Tulipifera) 5 to 7 ft., \$3.95 each... SALE PRICE **2 for \$3.96**
- SYCAMORE** 16T21 (Platanus Occidentalis) 5 to 7 ft., \$2.95 each... SALE PRICE **2 for \$2.96**
- MT. ASH** 16T22 (Sorbus Aucuparia) 6 to 8 ft., \$4.85 each... SALE PRICE **2 for \$4.86**
- WHITE BIRCH** 16T24 (Betula Alba) 5 to 6 ft., \$2.50 each... SALE PRICE **2 for \$2.51**
- SILVER MAPLE** 16T25 (Acer Saccharinum) 3 to 4 ft., 60c each... SALE PRICE **2 for 61c**
- CHINESE ELM** 16T26 (Ulmus Pumila) 3 to 4 ft. size, 50c each... SALE PRICE **2 for 51c**
- WHITE BIRCH** 16T27—(European, Most beautiful) 18 to 24 inch, 2 for 97c... SALE PRICE **3 for 98c**
- DOGWOOD** 16T28 (White Flowering) 3 ft., 5 yr. bushy, \$1.25 ea... SALE PRICE **2 for \$1.26**

FINEST HARDY SHRUBS

- Beautiful Blooms and Berries
- Colorful Foliage and Branches

COTONEASTER DIVARICATA—17K12—Buy this high class shrub at new low prices. Thick, deep lustrous, small leaves with crimson autumn tints. Small pink jewel-like flowers in spring, brilliant red berries in fall. 10 to 15 inch pot plants, 50c ea.; 3 for \$1.29. 3 ft., 3 yr. size, 98c ea.; 3 for \$2.75.

FRAGRANT PINK SNOWBALL—17K14—(*Viburnum Carlesi*) Brilliant rosy-red buds open exquisite shell-pink. Large, snowball shaped blooms are intensely fragrant, scenting the entire yard. Special low price, 10 to 15 inch pot size, 2 for 98c; 6 for \$2.50. 2 to 3 ft. size, \$4.50 each; 3 for \$12.35.

THE BEST BARBERRY—17K15—(*Berberis Mentorensis*) (Plant patent 99) Heavy, thick, dark green foliage and handsome, upright growing plants. Fine, semi-evergreen landscape shrub for hedging and landscaping. 15 to 18 inch, \$1.00 each; 3 for \$2.75; 100 for \$60.00. Pot size, 6 to 8 inch size, 55c each; 3 for \$1.35.

VIOLET CHASTE SHRUB—17K16—(*Vitex Macrophylla*) Distinct and beautiful, with abundance of radiant lavender flowers on huge spikes (often 1 ft. long) through the summer. Handsome pointed, star-like foliage. Grows 6 to 8 ft. tall. 18 to 24 inch, 70c each; 3 for \$1.75. 2 to 3 ft., 90c ea.; 3 for \$2.40.

POTENTILLA GOLD DROP—17K17—Charming, small irregular mound-like plants about 2 ft. high. The dense fern-like foliage is studded with cheerful butter-cup-shaped, golden-yellow flowers continuously from June to Nov. Hardy, easy to grow, colorful shrub for low borders, beds and home plantings. Bushy, 1½ ft. \$1.15 each; 3 for \$2.95.

PINK FL. ALMOND—17K18—(*Prunus glandulosa*) Beautiful compact 3 ft. plants are smothered in early spring with large, double, rose-pink blooms. Own root plants. 12 to 18 inch, 70c each; 3 for \$1.75. 3 yr., 1½ to 2½ ft., \$1.00 each; 3 for \$2.69.

EVERBLOOMING DWARF SPIREA — 17K19 — (*Anthony Waterer*) Low, mound-like plants filled with bright rose-red flowers resembling a cushion mum in late spring with scattering blooms all season. 2 yr., 9 to 12 inch, 40c each; 3 for 98c. 3 yr., 12 to 15 inch, 65c each; 3 for \$1.69. 3 yr., heavy, 15 to 18 inch, 85c each; 3 for \$2.25.

ROSE WEIGELIA—17K20—(*Abel Carreri*) The most colorful and profuse blooming. Big clusters of rosy-pink flowers in such profusion they hide the foliage for weeks each spring. Scattering blooms all season. 2 yr. 12 to 18 in., 37c each; 3 for 75c. 2 to 3 ft. size, 75c each; 3 for \$1.95.



SMOKE TREE

17K1—(*Rhus cotinus*) Attractive tree-like shrub enveloped in showy masses of purplish-gray, misty flowers for many weeks during mid-summer. Bright red and gold autumn foliage. Hardy, easy to grow. 3 yr., 18 to 24 inch, \$1.10 ea.; 3 for \$2.95. 3 yr., 2 to 3 ft., \$1.50 ea.; 3 for \$3.95. 4 yr., 4 ft., \$1.90 ea.; 3 for \$5.25.

DEUTZIA

17K2—(*Pride of Rochester*) Prized for its profusion of beautiful, large, double white flowers with pink tinge. One of the most neat and colorful, fast growing, tall upright growing shrubs. A choice variety that exceeds all deutzia in size of blooms. 12 to 18 inch, 40c each; 3 for 98c. Big, 2 to 3 ft., 80c each; 3 for \$2.15.

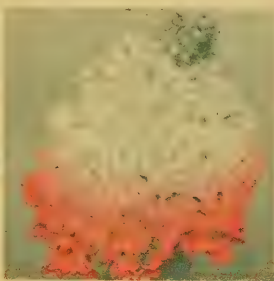
BURNING BUSH

17K3—(*Euonymus Alatus Compacta*) Eye-catching for its brilliance of rosy-scarlet-crimson leaves each fall. Highly recommended for its pale yellow flowers; red berries, cork bark, compact growth of glossy foliage. 3 yr., 1 ft., \$1.19 ea.; 3 for \$3.25. 4 yr., 2 to 3 ft., \$2.45 ea.; 3 for \$6.60. Pot size, 6 to 8 inch, 60c ea.; 3 for \$1.50.



SWEET SHRUB

17K4 — (*Calycanthus*) Unique, hardy shrub with handsome glossy leaves that stay attractive all season. Odd spicily fragrant, chocolate-red flowers fill plants in late spring. 3 yr. heavy, 1½ to 2 ft., 90c each; 3 for \$2.35.



HYDRANGEA P. G.

17K5 — Massive snowy-white flowers in late August change to beautiful rose-pink color and remain pretty for weeks. Winter hardy. 12 to 18 inch, 60c ea.; 3 for \$1.50. 18 to 24 inch 80c ea.; 3 for \$2.15. 2 to 3 ft., \$1.00 ea.; 3 for \$2.69.



FIREBUSH

17K6—(*Cydonia*) Select, upright growing red flowering strain grown from cuttings (better than seedlings). Plants are a fiery mass early each spring when blooming. 15 to 18 inch, 60c each; 3 for \$1.50. 2 to 3 ft., 95c each; 3 for \$2.45.



RED LEAF BARBERRY

17K7—(*Thumbergi atropurpurea*) One of the most colorful and satisfactory red-leaf shrubs. Bright red foliage all season. 12-18 inch 2 yr., 60c ea.; 3 for \$1.50. 15-18 inch 3 yr., 70c ea.; 3 for \$1.75. 24-30 inch 4 yr., 95c ea.; 3 for \$2.25.



SPIREA VAN HOUTTEI

17K9 — (*Bridalwreath*) The famous all purpose dependable shrub. Plants are a mass of white in full bloom late each spring. 12 to 18 inch size, 3 for 79c; 6 for \$1.45. 2 to 3 ft. size, 70c each; 3 for \$1.75; 10 for \$5.50.



BUSH HONEYSUCKLE

17K8—(*Red Flowering L. Zabelli*) Rapid growing, tall, hardy shrubs for sun or shady locations. Highest rated and most colorful variety. 1½ ft., 39c ea.; 3 for \$1.00. 3 to 4 ft., 85c ea.; 3 for \$2.25; 10 for \$6.95.



Old Fashion Snowball

17K10—(*Viburnum opulus sterilis*)—Fine, big, crispy white blooms fill plants for several weeks in May. Excellent for bouquets, hardy plants. 12 to 18 inch, 50c each; 3 for \$1.25. 2 to 3 ft., 85c each; 3 for \$2.25.



RED WEGELIA

17K11 — (*Eva Rathke*) Filled with brilliant cardinal-red blooms through May and June. Scattering blooms all season. Select strain. 18 to 24 inch, 65c each; 3 for \$1.65. 2 to 3 ft., 98c each; 3 for \$2.65.

Beautiful Hardy Flowers

Grow Each Year
Without Replanting



HOLLYHOCK GARDEN

18P1—(Double Triumph)—New hybrids of Pink, Red, Orange, Yellow and White. Tall, strong stalks with 3 to 4 inch double and semi-double blooms. Easily grown, hardy plants, colorful for 4 to 8 weeks. **2 for 45c; 6 for \$1.00; 12 for \$1.89.**



CARNATIONS

18P2 — Everblooming hardy Grenadin hybrids. Big, double, fragrant blooms summer and fall. Hardy, easy to grow plants with handsome silvery-foliage. Assorted rainbow colors. Field grown plants, **2 for 65c; 4 for \$1.20; 10 for \$2.85.**



BUTTERFLY FLOWER

18P3—(Asclepias Tuberosa) — Clusters of brilliant orange during July and August when most plants in the border are not in bloom. The hundreds of beautiful butterflies it attracts are an added interest. **35c ea.; 3 for 90c; 6 for \$1.65.**



LUPINES

18P4—(Giant Russell) — Amazing in their size and beauty of color. Spikes 3 to 5 ft. tall with blue, pink, red, yellow, maroon, purple and bi-color flowers. Big plants will produce an abundance of flowers. **33c each; 3 for 85c; 6 for \$1.35.**



BASKETS OF GOLD

18P5 — (*Alyssum saxatile compactum*)—Hardy, dwarf perennials with silvery foliage that is completely covered with bright yellow blooms in early spring. Fine for rock garden and borders. **29c each; 3 for 70c; 6 for \$1.25; 10 for \$1.98.**



COREOPSIS DOUBLE SUNBURST

18P6—Finest and most showy of all coreopsis. Rich golden - yellow double blooms in great abundance for cutting and garden display throughout summer. Easy to grow and hardy. **30c ea.; 3 for 75c.**



HARDY SWEET PEAS

18P7 — Large, fragrant flowers in profusion throughout summer. Hardy, fast climbing vines that grow for years without replanting. Assorted colors of red, pink, white (no choice of colors, mostly red). **30c ea.; 3 for 75c; 6 for \$1.35.**



GAILLARDIA DAZZLER

18P8 — Excellent summer flowering perennial. Withstands hot dry weather. Blooms from June to November. Large, daisy-like flowers of crimson, orange, gold, 3 to 4 inches across. Extra choice strain. **35c ea.; 3 for 90c; 6 for \$1.65.**



PAINTED DAISY

18P9—(Pyrethrum) — Robinson's Giants. Large flowering European strain of brightest red and pink colors. Hardy, fast growing, free blooming plants with attractive foliage. You can divide clumps. **35c ea.; 3 for 90c; 6 for \$1.65.**



COLUMBINE AQUILEGIA

18P10 — (*Imperial Hybrids*)—Beautiful, large, long spurs of white, blue, pink, violet, yellow, etc., in all combinations. Large, tall, free flowering plants bloom from early to late spring. Easy to grow. **2 yr., 30c each; 3 for 75c; 6 for \$1.35.**

DAY LILY SPECIAL

18PG22—One each Hyperion, Purple Waters, Mikado, Seminole Chief, Dortha, Kanapoha, Rajah, Kwanso described opposite. Regular \$8.24 value.

All 8 for **\$6.95**



Hemerocallis Day Lilies

Choice selection of the better improved varieties. Easy to grow, plants increase and can be divided.

HYPERION—18P14—Finest yellow variety. **75c each; 3 for \$1.95.**

PURPLE WATERS—18P15—Huge, velvety-purple with gold throat. **\$1.10 each; 3 for \$2.95.**

MIKADO—18P16—Fragrant, bright orange. Mahogany red throat. **50c each; 3 for \$1.19.**

SEMINOLE CHIEF—18P17—New velvety cherry-red. Free flowering. **\$1.00 each; 3 for \$2.75.**

DORTHEA—18P18—6 inch peach-pink, purple eye. **\$1.95 each; 3 for \$5.50.**

KANAPOHA—18P19—Rich raspberry-red. **\$1.75 each; 3 for \$4.95.**

RAJAH—18P20—Gay bi-colored red, free flowering. **69c each; 3 for \$1.85.**

KWANSO—18P21—Large blooms of double orange. **50c each; 3 for \$1.19.**



SHASTA DAISY

18P12 (Alaska)—One of the largest and most satisfactory daisies. Enormous flowers, of pure white with gold centers, in abundance through June and July. Extremely hardy of easy culture. **29c ea.; 3 for 70c; 6 for \$1.25.**



RED HOT POKER

18P11—(Tritoma Pfitzer)—Stately plants with glossy, narrow foliage and profusion of orange-scarlet blossoms. Most dependable, colorful and profuse blooming variety. Blooms through Aug. and Sept. **35c ea.; 3 for 90c; 6 for \$1.65.**



BABY'S BREATH (Gypsophila)

WHITE BABY'S BREATH
19P1 — (*Paniculata*) — Tall plants covered with single, misty-white blooms. Excellent for cutting. 2 yr. 30c each; 3 for 75c.

PINK BABY'S BREATH
19P2 — (*Oldhamiana*)—Hardy and free blooming. Tiny blossoms of flesh pink are borne in profusion and carried close in airy terminal panicles. Blooms from August till frost. Best misty mixer for bouquets. Strong, 2 yr. plants. 35c each; 3 for 90c.

DOUBLE BABY'S BREATH
19P3 — (*Grafted Bristol Fairy*) — A wonderful introduction. Bristol Fairy produces misty spires in which the individual blossoms are large and of much purer white. It flowers almost continuously during summer. Strong, grafted blooming size pot plants. 69c each; 3 for \$1.90.

Baby's Breath Garden

- 1 White Baby's Breath . . . \$.30
- 1 Bristol Fairy, double white .69
- 1 New Pink Baby's Breath . . .35

Certified catalog value. \$1.34

19PG4—All 3 unlabeled.

3 for 98¢



Platycodon Special

19PG9 — *Blooming size plants. One each unlabeled.*

- 1 Shell Pink \$.40
- 1 Double White55
- 1 Double Blue45
- 1 Dwarf Blue35

Catalog value \$1.75

all 4 for \$1.35

Hardy Garden PLATYCODON

Big, balloon-shaped buds that open into perfect stars of wax-like flowers. Blooms for many weeks through summer. Winter hardy and easy to grow.

SHELL PINK
19P5 — Large, showy, clear, shell-pink flowers on 20 inch stems. 40c each; 3 for 98c.

DOUBLE BLUE
19P6 — Grows more dwarf than shell-pink. Has big, double blue blooms. 45c each; 3 for \$1.15.

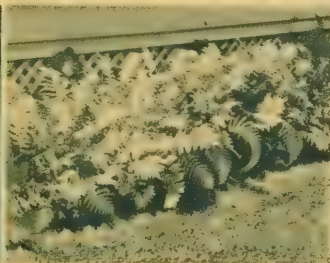
DOUBLE WHITE
19P7 — Magnificent waxy white blooms like gardenias. Exceptionally beautiful. 55c each; 3 for \$1.50.

DWARF BLUE MARESI
19P8 — Large, deep blue flowers in abundance on 18 inch stems throughout summer. 2 yr., 35c each; 3 for 90c; 6 for \$1.65.



VESPER IRIS

19P14—New, long-blooming iris with hundreds of jewel-like flowers. More blooms in July and August than any other iris. Lavender and blue flowers vary in size, shape, and color with markings of copper, gold, brown and red. Hardy plants are beautiful and valuable for summer bouquets. 29c each; 3 for 75c; 6 for \$1.40.



Decorative Hardy OUTDOOR FERNS

Best for shady locations. Divide when they grow thick.

OSTRICH FERN — 19P10 — Tall, plummy, graceful and useful for decorations.

ROYAL FERN — 19P11 — More dwarf, dark, glossy foliage.

Choice of above 2 hardy ferns, big clumps. 38c each; 3 for 95c; 6 for \$1.75.

SPECIAL- 19PG12- 5 for \$1.45
3 Ostrich; 2 Royal.

DELPHINIUMS

Superb Pacific Hybrids

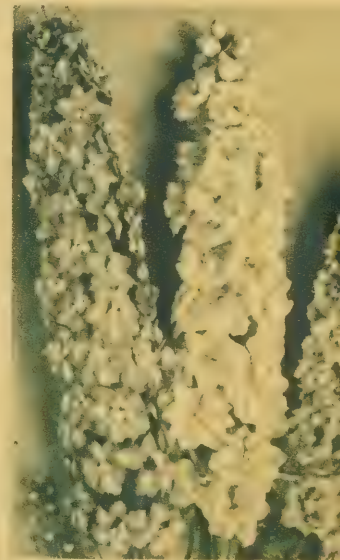
19P15—Magnificent spikes on tall, strong stems 3 to 6 ft. tall. Filled with individual flowers often as large as silver dollars. Harmonious colors of deepest violet through lavender, pink, light blue and mauve. Without question, the world's finest strain for size, beauty, freedom of bloom, hardiness and healthiness. Assorted colors only. 45c each; 3 for \$1.15; 6 for \$2.10

Delphinium Belladonna

19P16—The plants are not as tall as the popular hybrids but they produce many more bloom spikes especially nice for cutting. The strong, wiry stems are 3 to 4 ft. tall and the blooms are produced through spring and again in the fall. Very hardy and of easy culture. 35c each; 3 for 85c; 10 for \$2.65.

Delphinium Bellamosa

19P17— Identical in every way to Belladonna except the blooms are a deep, rich blue. 35c each; 3 for 85c; 10 for \$2.65.



BLUE FRINGED DAISY

19P19 — (*Erigeron*) — Beautiful clusters of azure blue flowers for several months each summer. Excellent for cutting. Hardy, easy to grow. Can divide plants. 40c each; 3 for \$1.00; 6 for \$1.90.



HELIOPSIS ZINNA

19P20 — (*Lemoines giants*) Large, hardy, double blooms of rich golden-yellow produced in abundance from July through August on strong 2 to 3 ft. stems. Excellent for bouquets. 38c ea.; 3 for 95c; 6 for \$1.70.



DIENER'S DOUBLE DAISY

19P21 — (*Shasta Daisy*) Nearly double, like China aster, with fringed, fluffy petals. Excellent for bouquets. Best of all double Shastas. Hardy, vigorous, and free flowering. 35c each; 3 for 90c; 6 for \$1.65.



NEW SHASTA DAISY

19P22—(*Mark Riegel*)—Lovely white flowers with double row of long petals. Outstanding for large size, free blooming, strong stemmed plants. 1st time offered at this low price. 2 yr. 69c each; 3 for \$1.95.



MORDEN'S PINK

19P23 — (*Lythrum*) — Grows about 3 ft. tall and flowers profusely from June to Sept. Unsurpassed for beautiful, long lasting bouquets. Graceful, tall spikes of bright rose-pink. Hardy, easily grown. Divide every 3rd year. 55c ea.; 3 for \$1.35.



BIG NORTHERN OHIO FIELD GROWN EVERBLOOMING **HYBRID TEA ROSES**

Plant Spring Hill's big, hardy, Ohio grown roses this fall. You get bigger, earlier and more abundance of blooms next spring, summer and fall. All hybrid tea roses listed are continuous flowering from May to winter. Choice of dependable, hardy varieties for those who want a big supply of blooms for cutting and garden. Our Ohio grown roses are as fine as can be grown, they grow and bloom better.

(A) PINK DAWN

20R1—Huge, vivid rose-pink, always dependable.

(B) CHRISTOPHER STONE

20R2—Brilliant, big, fragrant, crimson-scarlet.

(C) ECLIPSE (Patent 172)

20R3—Magnificent buds, huge golden flowers.

(D) PRES. HOOVER

20R4—Extra large, blend of red, gold and pink.

(E) STERLING (Patent 201)

20R5—Magnificent flaming pink. Superb every way.

(F) JOSEPH PERRAUD

20R6—Large, golden-buff with salmon shadings.

(G) CRIMSON GLORY (Patent 105)

20R7—Popular world renowned red beauty.

(H) K. A. VICTORIA

20R8—Big double white, outstanding in every way.

Choice of above 8 roses. 2 yr. No. 1 1/2 AAN grade, Ohio grown. Guaranteed continuous blooming.

\$1.10 each; 3 for \$2.85

20RG9—Special Rose Garden of 8 as pictured. One Each A, B, C, D, E, F, G, H.

All 8 for **\$7.20**

Choice of above 8 roses, 2 yr. No. 1 AAN grade, Ohio grown. Guaranteed continuous blooming.

\$1.25 each; 3 for \$3.35

20RG10—Rose Garden of 8 as pictured, one each A, B, C, D, E, F, G, H.

All 8 for **\$8.40**

EVERBLOOMING HYBRID TEA

Rose Color Special

20RG16—Spring Hill makes this special low price offer for those who care little for names but want abundance of continuous double blooms. **GUARANTEED SATISFACTION** one each scarlet, pink, yellow, bicolor, white and crimson. Spring Hill's selection of varieties from our hardy OHIO GROWN BUSHES. Only the best, double H. T. everblooming kinds. One each of six different colors named above, shipped unlabeled in bundles of six. No broken collections.

Thrifty 2 year field grown seconds

6 for \$4.79

Many varieties growing at the nursery not listed in this catalog

FINEST HARDY EVERBLOOMING **CLIMBING ROSES**

Four excellent hardy, rapid growing climbing roses that bloom throughout the season. Plant now for gorgeous blooms next summer.

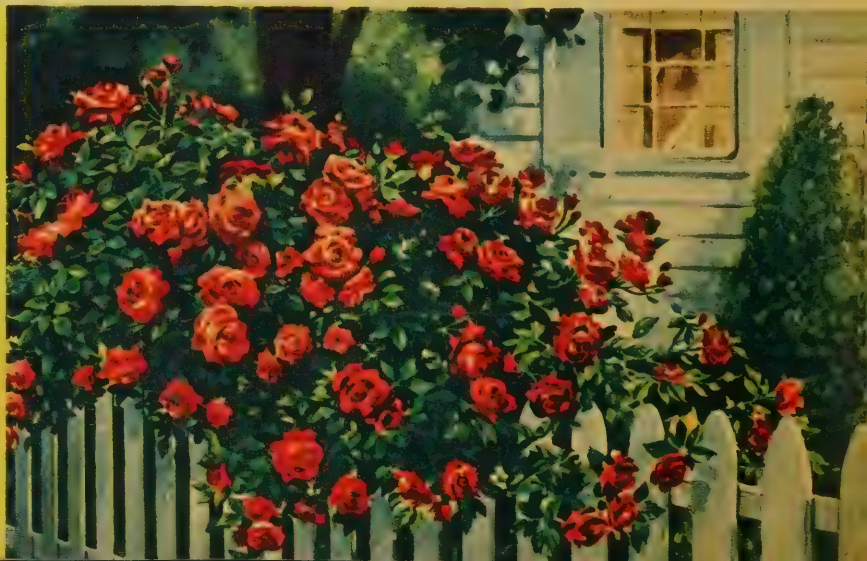
CLIMBING BLAZE—20R11—(Patent No. 10) Magnificent profusion of vivid scarlet blooms as pictured opposite.

CLIMBING NEW DAWN—20R12—(Patent No. 1) Rated finest hardy everblooming climber. Lovely apple-blossom pink.

CLIMBING GOLD RUSH—20R14—Vigorous growing, free flowering, hardy, healthy, new, golden-yellow. Recommended.

CLIMBING WHITE DAWN—20R15—New everblooming, double white. Very outstanding.

Choice of above 4 hardy, climbing Ohio grown roses. 2 yr. No. 1. **\$1.10 each; 3 for \$2.75. Jumbo, XX size, \$1.35 each; 3 for \$3.60.**



PRIZE WINNING
EVERBLOOMING

PATENTED ROSES

Patented roses are new varieties, with outstanding merit, that have been granted patent rights. This gives the originator protection and encourages him to continue his research. The six patented roses listed below are all fully double blooming, hybrid tea roses that will bloom profusely and continuously in your garden from late May to late fall.

CHARLOTTE ARMSTRONG

21R1—(Patent No. 455—AAR's Award) Magnificent cerise-red. Considered one of the finest roses in existence. **\$2.25 each; 3 or more at \$2.00 each.**

KATHERINE T. MARSHALL

21R2—(Patent 607—AAR's Award) Exquisite form and fragrance, tremendous size, glowing pink. **\$1.75 each. 3 or more at \$1.55 each.**

FORTY NINER

21R3—(Patent 792—AAR's Award) Most brilliant of all bi-colors. Outside of petals bright yellow, inside vivid red. **\$2.50 each; 3 or more for \$2.20 each.**



NOCTURNE

21R4—(Patent 713—AAR's Award) Beautiful long, trim buds. Richly textured, cardinal-red blooms. Recommended. **\$2.00 each. 3 or more at \$1.75 each.**

REX ANDERSON

21R5—(Patent No. 325)—Huge, show class, well shaped snow-white blooms with ivory overcast. Vigorous growth. **\$1.75 each. 3 or more at \$1.55 each.**

PEACE

21R6—(Patent 591—AAR's Award) World renowned for its massive size, exquisite gold and pink color, profusion and sturdiness. **\$2.50 each; 3 or more for \$2.20 each.**



FRAU KARL DRUSCHKI

21R8—The Famous White Rose of many uses. The world renowned pure, snow-white hybrid perpetual rose that blooms throughout the season and is so hardy and rugged. Unsurpassed for large, double, long lasting blooms, superb for cutting. It is so tough, disease resistant and hardy it has many uses as planting in borders, shrub beds as well as in the rose garden. No. 1 size, **\$1.10 each; 6 for \$5.25; 10 for \$8.50.**

3 for \$2.75



PATENT ROSE SPECIAL

1 Char. Armstrong	\$2.25	21RG7
1 K. T. Marshall	1.75	All 6
1 Forty Niner	2.50	roses
1 Nocturne	2.00	labeled
1 Rex Anderson	1.75	
1 Peace	2.50	\$11.25
Catalog value		\$12.75

Low Growing Floribunda or POLYANTHA ROSES

Beautiful, shapely, compact plants about 12 to 18 inches tall. Noted for their great abundance of colorful blooms in clusters spring, summer and fall.

GLORIA MUNDI—21R9—Glowing salmon-orange to scarlet. Great elegance.

MARGO KOSTER—21R10—Beautiful large salmon-rose with pleasing orange shadings.

IDEAL—21R11—Colorful rich, deep velvety crimson. Favorite and reliable variety.

TRIOMPHE DE ORLEANS—21R12—Immense cherry-red flower clusters. Very colorful.

Choice of above 4 dwarf polyantha 2 yr. Ohio field grown Standard No. 1½ grade, **\$1.00 each; 3 for \$2.65; 10 for \$8.25.** 2 yr. No. 1 grade, **\$1.20 each; 3 for \$3.30; 10 for \$9.95.**

Polyantha Rose Special

• 1 Gloria Mundi • 1 Ideal

• 1 Margo Koster • 1 Triomphe de Orleans

21RG14—2 yr.
No. 1 Plants

21RG15—2 yr.
No. 1½ plants

4 for \$3.98

4 for \$3.35

OHIO GROWN BEAUTIFUL HARDY FLORIBUNDA ROSES

GOLDBLOCKS—21R16—(Patent 672) The 1st and best golden-yellow floribunda. A wonderful addition for your garden. **\$1.50 each. 3 or more at \$1.30 each.**

RED PINOCCHIO—21R17—(Patent 812) Great flower clusters of rich velvety crimson. Exceptionally beautiful, free flowering. **\$1.50 each. 3 or more at \$1.30 each.**

FASHION—21R18—(Patent 789) Sparkling coral-pink and gold. Greatest AAR's winner. **\$2.00 each. 3 or more at \$1.75 each.**

Patent Floribunda Rose Special

21RG19—One each Goldilocks, Red Pinocchio, Fashion. Regular \$5.00 value.

All 3 for \$4.35



DAGMAR SPAETH—21R21—Superb, big, double, fragrant snow-white blooms.

FLORADORA—21R22—(AAR's award) Large camellia-shaped, orange-red blooms.

IMPROVED LAFAYETTE—21R23—Immense sweet-scented blooms of vivid crimson.

ROSENELFE—21R24—Exceptionally dainty La France pink. Handsomely shaped, excellent for decorations.

EUTIN—21R25—The most colorful gigantic or extra large flower heads of glowing crimson-red.

Choice of above 5 floribunda roses, 2 yr. Ohio field grown standard No. 1½ grade. **\$1.10 each; 3 for \$2.85; 10 for \$8.95.** 2 yr. No. 1 grade, **\$1.25 each; 3 for \$3.45; 10 for \$11.00.**

Floribunda Rose Specials

• 1 Dagmar Spaeth • 1 Improved Lafayette
• 1 Floradora • 1 Rosenelfe • 1 Eutin

21RG26—
No. 1 grade

21RG27—
No. 1½ grade

5 for \$5.55

5 for \$4.49



30 Ft. EVERGREEN GROUP

12 Giant Evergreens as pictured at amazing savings.

22E1—Spring Hill's 105th Anniversary Special! Guaranteed 12 big, heavy, landscape evergreens as pictured for over 25% discount from catalog prices. Dug bare-root at nursery and wrapped in peat for shipping to save delivery costs. This beautiful planting for 50% less than you usually pay. F. O. B. Tipp City, Ohio. All 12 Evergreens for only \$49.50.

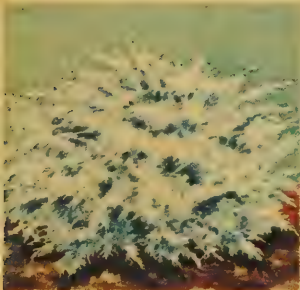
\$49⁵⁰

- A—2 Dwarf Golden Biota, 2 ft. \$ 9.50
- B—2 Pyramid Arbor Vitae, 3 ft. 9.95
- C—2 Globe Arbor Vitae, 1½ ft. 8.45
- D—2 Juniper Pfitseriana, 2 ft. 11.50
- E—2 Spiny Greek Juniper, 2 ft. 9.50
- F—2 American Arbor Vitae, 3 ft. 8.95

REGULAR CATALOG VALUE. \$57.85

SAVE MONEY... GROW YOUR OWN EVERGREENS

PLANT YOUR OWN HOME... IT'S ECONOMICAL... YOU CAN OFTEN SAVE OVER 200%



New Blue JUNIPER PFITSERIANA

22E2—(Hetzi Glauca) Beautiful silvery-blue foliage. Fast growing, dependable, recommended. Pot size, 6 to 8 in. tall, 60c ea.; 3 for \$1.55. Heavy like picture, 12 to 15 inch spread, \$1.75 ea.; 2 for \$3.25. Big landscape size, 2 ft. spread \$5.75 ea.; 2 for \$10.95.



Spreading Yew TAXUS CUSPIDATA

22E3—Lustrous green foliage, spreading habit and ability to thrive in shade. Pot plants, 8 to 10 inches tall, 55c ea.; 3 for \$1.45. Heavy like picture, 10 to 15 inches tall, \$1.75 ea.; 2 for \$3.25. Big, 2 ft. size, \$6.00 ea.; 2 for \$11.50.



GOLDEN BIOTA A. N.

22E4—(Dwarf Golden Oriental Arbor Vitae) Compact, dwarf golden plants; perfect shape. Pot plants, 6 to 8 inches tall, 50c ea.; 3 for \$1.35. Heavy like picture, 12 to 15 inches tall, \$1.55 ea.; 2 for \$2.79. Big, 2 ft. tall, \$5.00 ea.; 2 for \$9.50.



GLOBE WOODWARDI

22E5—Grows naturally into dense globe-shaped plants. Best compact, dwarf variety. Pot plants, 6 to 10 inches tall, 50c ea.; 3 for \$1.35. Heavy like picture, 12 to 15 inches tall, \$1.65 ea.; 2 for \$2.95. Big 1½ ft. size, \$4.50 each; 2 for \$8.45.



JUNIPER PFITSERIANA

22E6—Best and most dependable spreading landscape evergreen for all climates and locations. Pot plants, 6 to 8 inches tall, 55c ea.; 3 for \$1.45. Heavy like picture, 12 to 15 inch spread, \$1.65 ea.; 2 for \$2.95. Big landscape size, 2 ft. spread, \$6.00 ea.; 2 for \$11.50

We grow our evergreens at Tipp City. Select from acres of high quality plants.



Pyramid ARBOR VITAE

22E7—Grows naturally and fast into tall, dense, slender, columns. Popular, dependable. Pot plants, 8 to 10 inches tall, 55c ea.; 3 for \$1.45. Heavy like picture, 15 to 18 inches tall, \$1.65 ea.; 2 for \$2.95. Big 3 ft. size, \$5.25 ea.; 2 for \$9.95.



Colorado BLUE SPRUCE

22E8—Impressive color and perfect shape adds beauty and value to any property. Rated the most beautiful of all evergreens. 4 to 6 inch planting size, 4 for \$1.00. 5 to 7 inch, 3 for 99c. Heavy 12 inch, bushy, \$2.95 each; 2 for \$5.50.



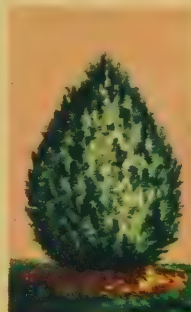
American ARBOR VITAE

22E9—Tall, broad, upright, fast growing. Useful for hedges, screens and foundation plantings. 4 year 8 to 10 inch size, 35c ea.; 3 for 90c. Heavy like picture, 15 to 18 inches tall, \$1.50 ea.; 2 for \$2.69. Big, 3 ft. tall size, \$4.75 ea.; 2 for \$8.95.



Upright Yew TAXUS HICKSI

22E10—Beautiful upright, semi-dwarf, landscape evergreen for sunny and shady locations. Pot size, 8 to 10 in. tall, 55c ea.; 3 for \$1.45. Heavy like picture 12 to 15 in. tall, \$1.65 ea.; 2 for \$2.95. Big 2 ft. tall size, \$6.00 ea.; 2 for \$11.50.



Spiny GREEK JUNIPER

22E11—Attractive bluish-green foliage, dense, dwarf plants. Pot plants, 6 to 8 inches tall, 50c each; 3 for \$1.35. Heavy (like picture) 12 to 15 inches tall, \$1.60 each; 2 for \$2.89. Big, landscape size, 2 ft. tall, \$5.00 each; 2 for \$9.50.



EVERGREEN FIRETHORN

22E12—(Pyracantha Ruayoni) New improved hardy variety filled with brilliant scarlet red berries through fall and winter. Handsome leaves stay green winter and summer. Pot plants, 6 to 9 inches, 60c each; 3 for \$1.65. Larger size, 15 to 18 inches, \$3.75 each; 2 for \$6.95.

NOW

SPECIAL REDUCED PRICES

15 MONTHS FOR ONLY \$1

Get 3 extra issues

40 MONTHS FOR ONLY \$2 Get 16 extra issues!

Get the WORLD'S LARGEST AND MOST INFLUENTIAL FARM MAGAZINE at this special low price! Folks with farm interests will profit from this big magazine with the famous FARMCAST page and reliable long-range weather forecasts. You'll get important national and local farm news and ideas you can use to

make and save money. The FARMER'S WIFE section

is a complete magazine for homemakers with recipes, patterns, fiction, etc. Join the more than 2,850,000 families who depend on FARM JOURNAL and FARMER'S WIFE to help them enjoy a better life as well as a good living! America's favorite farm magazine, IT WILL BE YOUR FAVORITE, TOO!



MAIL TODAY!

- \$1 for 15 months . . . or save even more
 \$2 for 40 months . . . only 5¢ an issue!
(Regular Rates . . . 12 months for \$1.00)

Name _____

Address _____

Town _____ State _____

Send check, money order or cash — AT OUR RISK!
To FARM JOURNAL, Box 958, Philadelphia 5, Pa.
Price outside U. S., \$1.50 per year.

GUARANTEE
Your money
back anytime
—for any reason—
on the unused
part of your
subscription.

RECOMMENDED BY SPRING HILL NURSERIES COMPANY

ACT NOW!

INCREASE YOUR PROFITS!

MAKE POULTRY PAY — join the 450,000 families who already depend on AMERICAN POULTRY JOURNAL. Poultry raisers, broiler and turkey growers will profit from the ideas, helps and valuable how-to-do-it information in every big issue.

Take Advantage of this Bargain Offer Today



48 MONTHS OF
HELP FOR ONLY \$1

How To:

- SAVE ON COSTS
- SAVE TIME
- SAVE WORK
- PREVENT DISEASE
- MAKE MORE MONEY!

SPECIAL $\frac{1}{2}$ PRICE OFFER!

ONE YEAR
TRIAL OFFER

50¢

FOUR YEARS \$1

(Special $\frac{1}{2}$ Price Offer)

Name _____

R.F.D. _____ Box _____ or Street _____

P.O. _____ State _____

Canada and Countries outside U. S. \$1.00 per year.

You'll get free expert answers to your poultry problems and news from poultry experimental farms. PLUS a huge women's section — recipes, patterns, garden hints, comics and cartoons. Mail this coupon NOW!

MARK YOUR CHOICE • FILL IN YOUR NAME • SEND MONEY AT OUR RISK • MAIL TODAY!

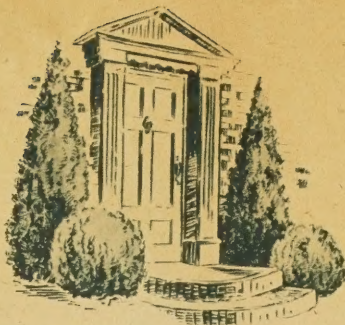
Send to: AMERICAN POULTRY JOURNAL, P.O. BOX 958, PHILADELPHIA 5, PA.

RECOMMENDED BY SPRING HILL NURSERIES COMPANY

3 for \$1.35. Heavy like picture,
12 to 15 inch tall. \$1.55 per 3.

3 for \$1.35. Heavy like picture,
12 to 15 inch tall. \$1.55 per 3.

3 for \$1.45. Heavy like picture,



Scotch Pine

23E1—Long, dark green needles. Tall, fast growing. Recommended for hedges, wind breaks and cluster planting. 4 yr., 8 to 10 inch, 50c each; 3 for \$1.35. 12 to 24 inch, \$1.65 each; 2 for \$2.95. 3 ft. size, \$5.00 each.

Irish Juniper

23E2—Tall, narrow, formal growth with neat, silvery foliage and sleek appearance. Does not grow very tall. Pot plants, 6 to 9 inch, 50c each; 3 for \$1.35. 12 to 18 inch, \$1.45 each; 2 for \$2.60. 3 ft. size, \$4.00 each.

ENTRANCE GROUP SPECIAL

(19% Discount) 23EG3

- 2 Pyramid Arbor Vitae, matched pair, 3 ft. size \$ 9.95
- 2 Globe Arbor Vitae, matched pair, 1½ ft. size 8.45
- Certified catalog value \$18.40

All 4 for \$15.75

Boxwood

23E4—(*Buxus Sempervirens*)—Select, hardy, compact strain of great charm and dignity. Plant for edging beds and home landscaping. 6 to 9 inch pot plants, 55c ea.; 3 for \$1.50. 18 inch, \$2.75 each; 2 for \$5.20.

Norway Spruce

23E5—Highly recommended for outdoor living Christmas trees, wind breaks, avenue and specimen plantings. Fast growing. 8 to 10 inch, 50c each; 3 for \$1.35. 12 to 18 inch, \$1.85 each; 2 for \$3.40. 3 ft. size, \$4.50 ea.

LOW PRICES FOR SMALL PLANTING EVERGREENS

It's economical, it's easy, it's interesting to plant and grow your evergreens. Excellent varieties for hedges, windbreaks, Christmas trees, wood lots and landscaping. Write for special wholesale prices on large orders.

Catalog Number	Size	Price for 5	Price for 10	Price for 25	Price for 100	
American Arbor Vitae	23E6	8-10 in.	1.35	2.25	4.95	17.50
Globe Arbor Vitae	23E7	5-7 in.	2.25	3.95	9.35	35.00
Pyramid Arbor Vitae	23E8	8-10 in.	2.35	4.40	10.60	39.95
Golden Biota A. N.	23E9	4-6 in.	2.25	3.95	9.35	35.00
Juniper Pfitseriana	23E10	6-8 in.	2.35	4.40	10.60	39.95
Blue Pfitseriana	23E11	6-8 in.	2.50	4.75	11.25	42.50
Spruce, Black Hill	23E12	3-6 in.	.90	1.45	3.35	12.50
Spruce, Colorado Blue	23E14	3-6 in.	.85	1.40	3.20	12.00
Spruce, Norway	23E15	3-6 in.	.85	1.40	3.20	12.00
Pine, Austrian	23E16	5-7 in.	1.00	1.75	3.95	15.00
Pine, Scotch	23E17	5-7 in.	.90	1.45	3.35	12.50
Pine, Dwarf Mugho	23E18	4-6 in.	1.00	1.75	3.95	15.00
Taxus Cuspidata	23E19	8-10 in.	2.35	4.40	10.60	39.95
Taxus Hicksi	23E20	8-10 in.	2.35	4.40	10.60	39.95

Drive to the Nursery for BIG SAVINGS ON HOME GROWN EVERGREENS

Balled and burlapped Ready to go . . . We grow the evergreens we sell. Many sizes and varieties not listed in catalog.



EVERGREEN DIGGING NOTICE—All evergreens for shipping will be fresh dug from our field bare root and wrapped in moist peat. Present day delivery and packing costs make it too expensive to ship balled and burlapped. Our experience shows that bare root evergreens deliver better and grow just as well. Balled and burlapped evergreens available at nursery.

HOW TO PLANT EVERGREENS—Plant evergreens immediately upon arrival so they do not dry out. Dig hole 8 to 10 inches larger than the ball of earth or root spread if wrapped in peat and shipped bareroot. Set evergreen 1 to 2 inches deeper than soil marks on the trunk. Fill hole half full of rich top soil, firm well, then water.



Porch Entrance Evergreen Group

23EG26—Shipped individually wrapped in high grade peat moss, fine for evergreens, mix with soil when planting. A Big Value Unsurpassed for the money. Reg. \$14.50 value.

- (A) 2 Pyramid Arbor Vitae, 18 to 24 inches tall. Spire-like matched pair . . . 2 for \$5.00
- (B) 2 Juniper Pfitseriana, 12-18 inch spread. Heavy 6 year, matched pair . . . 2 for \$5.00
- (C) 2 Globe Arbor Vitae, 12-15 inches round. Bushy, matched pair 2 for \$4.50

6 as pictured \$9.98

Hardy BROADLEAF EVERGREENS

Rhododendron

23E21—(*Catawbiense Grandiflorum*)—This fine evergreen shrub does not require shade—it is easy to grow in acid soil. In limestone areas or where soil is alkaline do not plant unless soil is made acid with aluminum sulphate and peat. Gorgeous rosy-lilac-purple to lavender-pink flowers produced in masses are magnificent. The broad, leathery, evergreen foliage has a majestic dignity in winter. Plants usually bloom 1st or 2nd year. Big, 3 yr. transplants, 12 to 18 inch, \$1.60 each; 3 for \$4.50.

Holly Leaf Mahonia

23E22—(*Aquifolia*) Glossy holly-like foliage. Compact growing hardy plants for landscape plantings. 6 to 8 inch, 50c each; 3 for \$1.25. 1 ft. size, \$1.65 each; 2 for \$3.15. 2 ft. size, \$3.75 each; 2 for \$7.20.

Evergreen Firethorn (See opposite page for color picture and complete description)

Wintergreen Bittersweet

23E23—(*Euonymus Newport*) Select, upright variety that grows 2 to 3 ft. tall. Handsome, dwarf, bushy, hardy evergreen shrubs, 6 to 8 inch pot plants, 50c each; 3 for \$1.29; 10 for \$3.95. 15 to 18 inch, bushy. \$1.35 each; 3 for \$3.75.

Viburnum Burkwoodi

23E24—Shiny dark green foliage, lovely sweet scented waxy blush-white blooms in spring. Tall, fast growing, hardy plants. 2 inch pot size, 98c each; 3 for \$2.75. 2 to 3 ft. size, \$2.95 each; 3 for \$8.50.

Viburnum Rhytidophyllum

23E25—Striking and beautiful plants with lustrous large narrow leaves deeply wrinkled. Beautiful white blooms in spring, large clusters of brilliant red fruits change to shiny black. A rare, tall growing (8 to 10 ft.) hardy shrub of aristocratic appearance. 2 inch pot plants, 89c each; 3 for \$2.50. Stocky, 2 to 3 ft. size, \$3.98 each; 2 for \$7.50.

BURKWOODI

RHODODENDRON

RHYTIDOPHYLLUM





AT BIG SAVINGS

Spring Hill's Selected Giant Darwin Imported TULIPS

DARWIN TULIP COLOR SPECIALS

- 24BG1—One each as pictured, 6 for 65c.
- 24BG2—Two each as pictured, 12 for \$1.10.
- 24BG3—Ten each as pictured, 60 for \$4.45.

24BG4—Four of each color as pictured above,
24 for \$1.90

Six of the most beautiful and most dependable, large flowering outdoor varieties pictured. Plant this fall for blooms next spring.

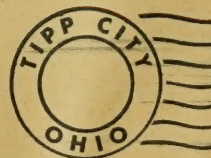
- (A) **RED MASTER—24B5**—Deep red, improved Pride of Harlem.
- (B) **GOLDEN HARVEST—24B6**—Beautiful, large, butter-cup yellow.
- (C) **QUEEN OF THE NIGHT—24B7**—Rare, striking velvety-maroon.
- (D) **THE PEACH—24B8**—Magnificent peach-pink, good, large flowers.
- (E) **ZWANENBURG—24B9**—One of the very finest; clean, pure white.
- (F) **REVEREND EUBANK—24B10**—Lovely bright lilac, blended grey.

Choice of 6 Darwin tulips pictured and described above all guaranteed 1st size, 11-12 c.m., imported bulbs. 6 of a kind 65c. 25 of a kind \$1.98. 100 of a kind \$6.79.

DARWIN TULIP RAINBOW MIXTURE

24BG11—We sell more of these fine, imported Darwin tulips each year because our customers are so well pleased with their great beauty and low price. Top quality 1st size, 11-12 c.m. bulbs, hand mixed from choice named varieties. 18 for \$1.00; 100 for \$4.89.

40 for \$1.98



SEC. 34.66 P. I. & R.
U. S. POSTAGE
PAID
PERMIT NO. 3
TIPP CITY, OHIO

Library, U.S. Dept. of
Agriculture
Washington, 25, D.C.

← SWEET SCENTED FLOWERING HYACINTHS

Low Prices for imported Holland grown bulbs. Finest obtainable, all bright and cheerful with exquisite fragrance. Easy to flower indoors also excellent for outdoor garden. Guaranteed to bloom. Large 15 to 16 c.m. bulbs.

Prices for six hyacinths pictured.
Order by name and number. 3 of a kind 58c; 6 of a kind 95c; 12 of a kind \$1.75; 24 of a kind \$3.29.

- QUEEN OF BLUES—24B12**
Lovely large, sky-blue.
- LA VICTORIA—24B14**
Finest big, brilliant red.
- PINK PEARL—24B15**
Best giant, rosy-pink.
- LA INNOCENSE—24B16**
Most popular white.
- CITY OF HARLEM—24B17**
Fine yellow, big flowers.
- KING OF BLUES—24B18**
The best dark blue.

MIXED HYACINTH COLOR SPECIAL

24BG19—Same fine imported Holland bulbs a size smaller in mixture of red, white, pink, yellow and blue. Blooming size 14 to 15 c.m. bulbs. 5 for 69c, 100 for \$11.95. 25 or more at 100 rate.

10 for \$1.35

SPRING HILL NURSERIES, Tipp City, Ohio

